

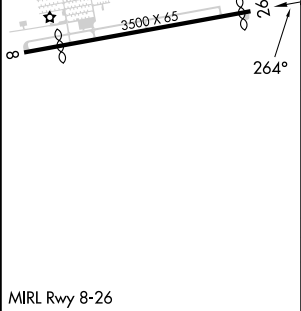
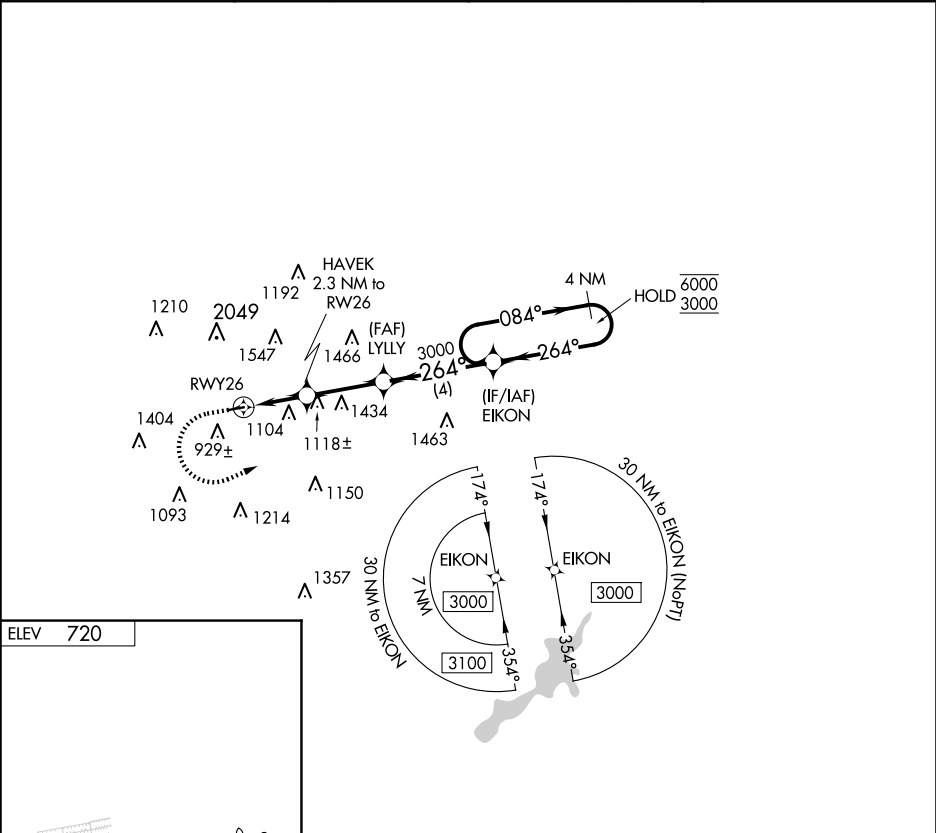
APP CRS	Rwy Idg	N/A
264°	TDZE	N/A
	Apt Elev	720




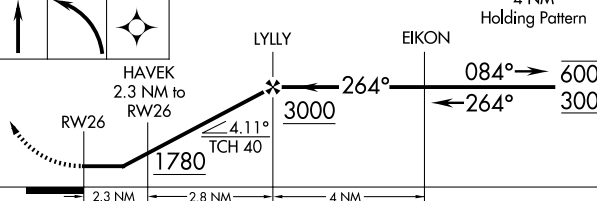

RNAV (GPS)-A

MORAINE AIR PARK (I73)

RNP APCH - GPS.	MISSED APPROACH: Climb to 1500 then climbing left turn to 3000 direct EIKON and hold.
NA Procedure NA at night. Rwy 8 and 26 helicopter visibility reduction below 1 SM NA. Use Dayton-Wright Brothers altimeter setting.	

MGY ASOS 118.375	COLUMBUS APP CON 118.85 269.275	UNICOM 122.7 (CTAF)
---------------------	------------------------------------	------------------------



1500	3000	EIKON	4 NM Holding Pattern			
						
						
CATEGORY	A		B		C	D
 CIRCLING	1440-1 720 (800-1)		1520-1 800 (800-1)		NA	