

APCH CRS 211°	Rwy Idg TDZE Arpt Elev	N/A N/A 933
-------------------------	------------------------------	--

[USAF]

TATALINA LRRS (PATL)

RNP APCH - GPS

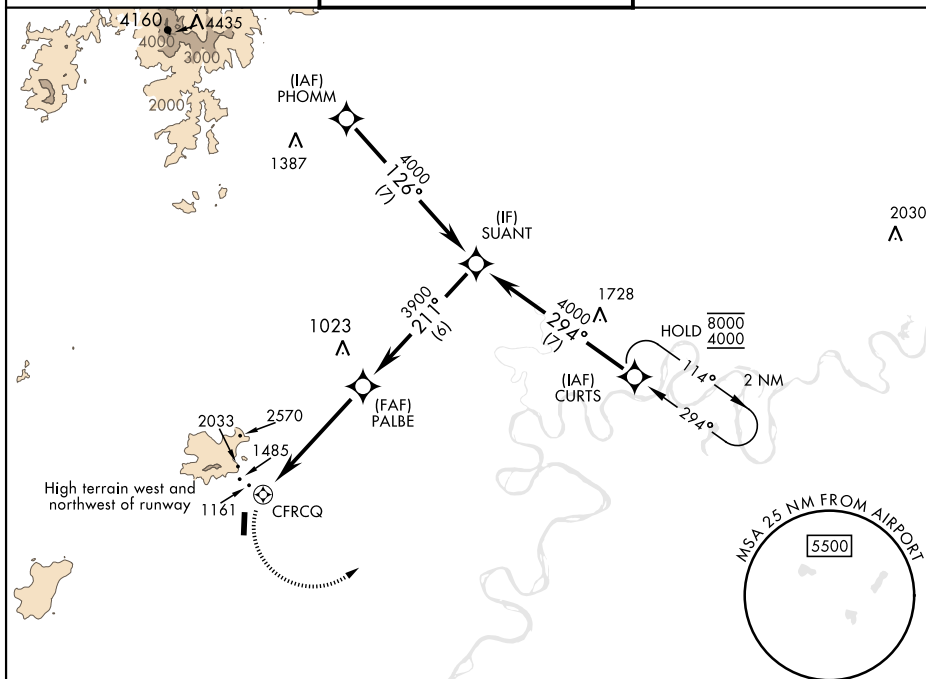
T * Circling NA to Rwy 17. Circling to Rwy 35 NA W of Rwy 17-35. Night Operations not authorized.

MISSED APPROACH: Climbing left turn to 4000 direct CURTS and hold.

KENAI RADIC
122.3

UNICOM
126.2 (CTAF) 364.2

AWOS-3



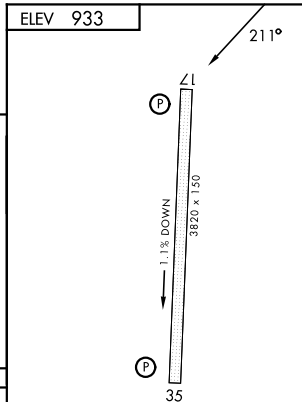
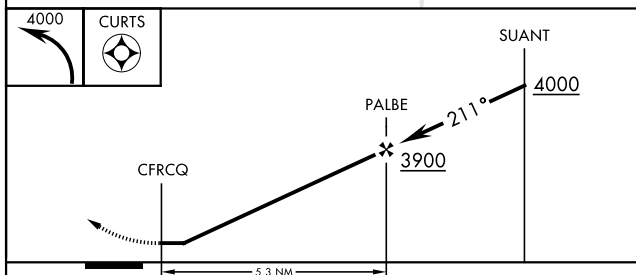
Uncontrolled Airspace below 1200' AGL within 4 NM of Tatalina airport

NOT FOR CIVIL USE

MILITARY CERTIFIED AIRCREWS OR
AUTHORIZED CONTRACT AIRCRAFT ONLY

EMERG SAFE ALT 100 NM 12,000

ELEV 933



CATEGORY	A	B	C	D
C CIRCLING*	1900-1¼ 967 (1000-1¼)	2440-1½ 1507 (1600-1½)	2920-3 1987 (2000-3)	NA

REIL Rwy 17 and 35

TAKOTNA, ALASKA

62°54'N-155°59'W

TATALINA LRRS (PATL)

Amdt 2 30NOV23

RNAV (GPS)-A

AK, 12 JUN 2025 to 07 AUG 2025