

RNAV (GPS) RWY 35

APCH CRS	Rwy Idg	3820
350°	TDZE	925
	Arpt Elev	933

[USAF]

TATALINA LRRS (PATL)

RNP APCH

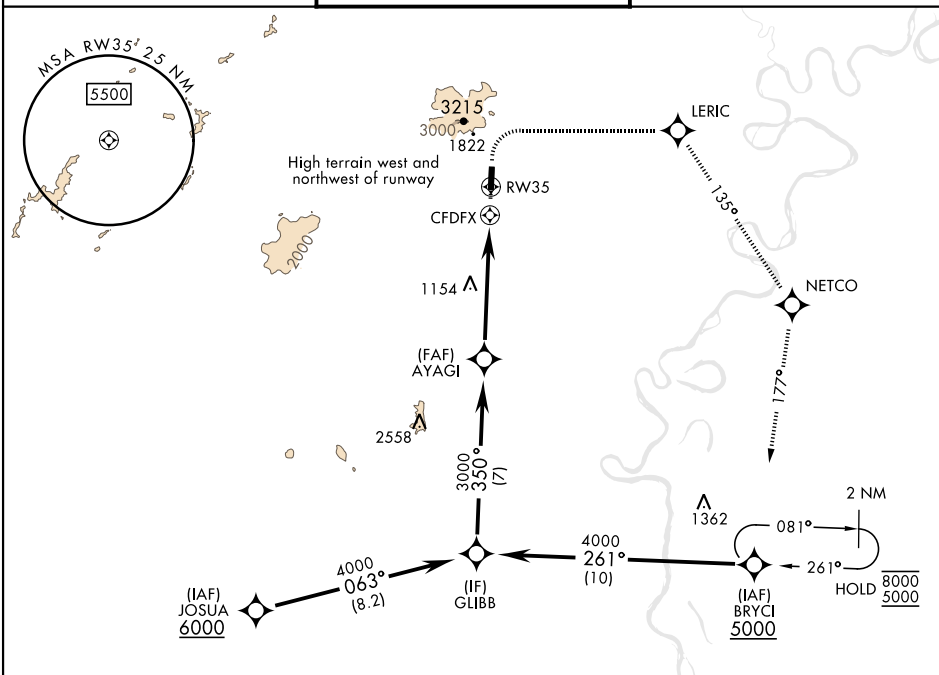
T Circling not authorized to Rwy 17. Night Operations not authorized.

MISSED APPROACH: (Do not exceed 165 KIAS until initial turn completion). Climb to 1500 then climbing right turn to 5000 direct LERIC, track 135° to NETCO, track 177° to BRYCI and hold.

KENAI RADIO
122.3

UNICOM
126.2 (CTAF) 364.2

AWOS-3



Uncontrolled Airspace below 1200' AGL within 4 NM of Tatalina airport

2207^A

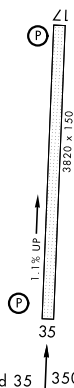
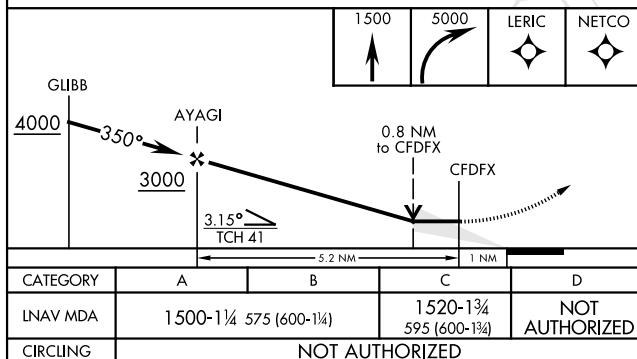
NOT FOR CIVIL USE

MILITARY CERTIFIED AIRCREWS OR
AUTHORIZED CONTRACT AIRCRAFT ONLY

EMERG SAFE ALT 100 NM 12.000

ELEV 933

TDZE 925



REIL Rwy 17 and 35 350°

TAKOTNA, ALASKA

62° 54' N-155° 59' W

TATALINA LRRES (PATL)

Amdt 3 30NOV23

RNAV (GPS) RWY 35