

WAAS CH 57940 W35A	APP CRS 351°	Rwy Idg TDZE Apt Elev	5943 675 693
--	------------------------	-----------------------------	---

RNAV (GPS) RWY 35

KENNETH COPELAND (4T2)

RNP APCH - GPS.

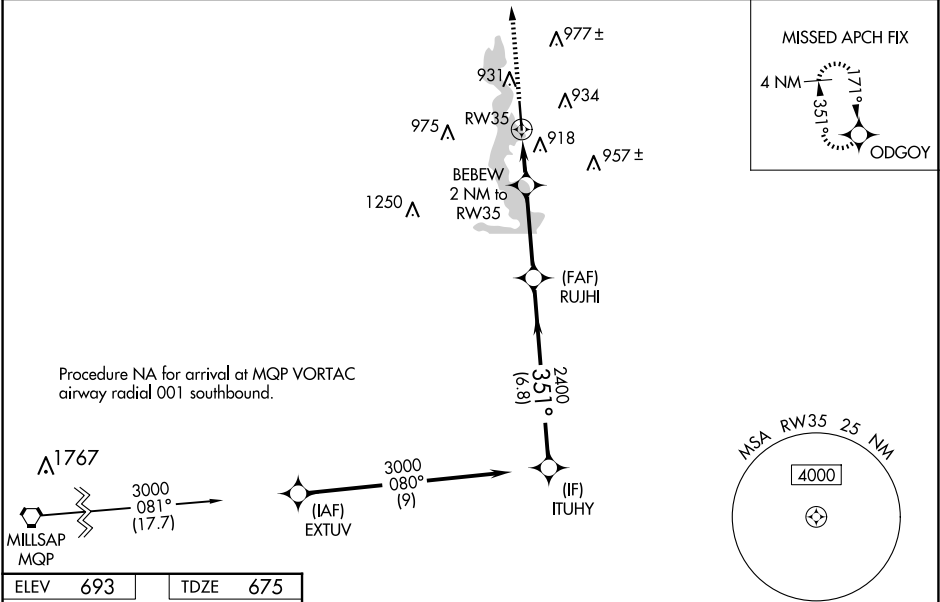
⚠

NA

Rwy 35 helicopter visibility reduction below $\frac{3}{4}$ SM NA. For uncompensated Baro-VNAV systems, LNAV/VNAV NA below -16°C or above 54°C. Baro-VNAV NA when using FTW altimeter setting. Obtain local altimeter setting on CTAF; when local altimeter setting not received, use FTW altimeter setting and increase LPV DA to 955 feet; increase LNAV/VNAV DA to 1191 feet; increase all MDAs 40 feet and LNAV visibility Cat C/D $\frac{1}{4}$ SM, and Circling visibility Cat C $\frac{1}{4}$ SM.

MISSED APPROACH:
Climb to 3100 direct ODGOY and hold.

LONE STAR APP CON 125.8 257.95	UNICOM 123.075 (CTAF) 0
--	--



ELEV 693	TDZE 675
----------	----------

