

APP CRS	Rwy Idg	N/A
228°	TDZE	N/A
	Apt Elev	454

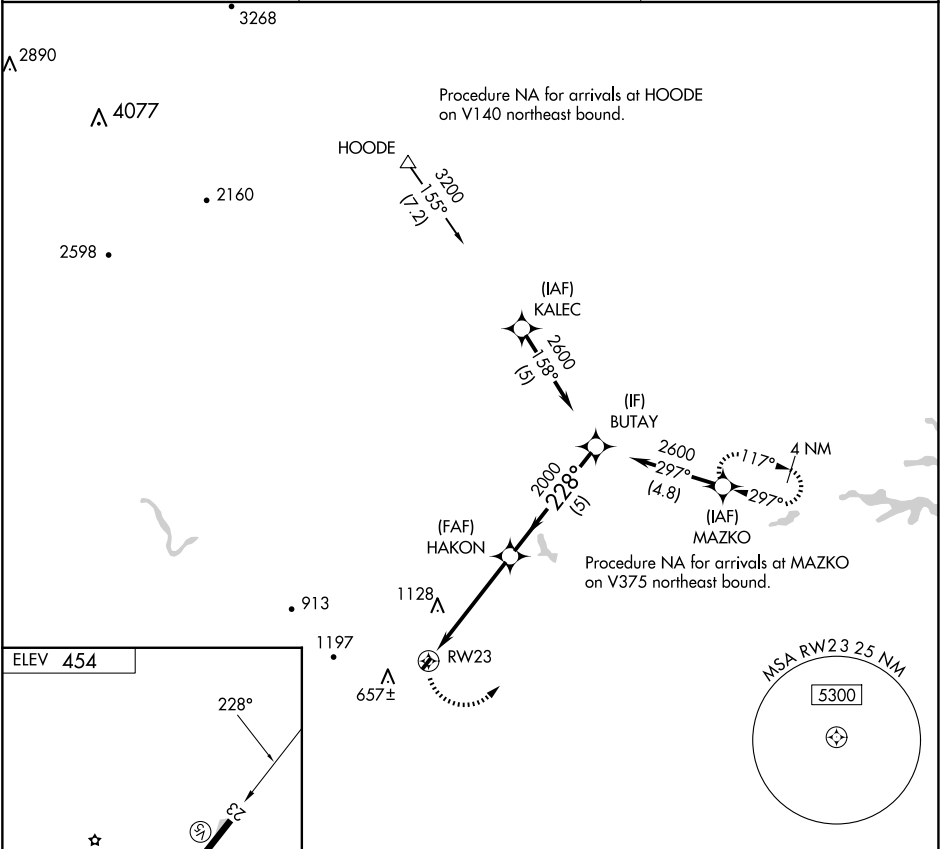
RNAV (GPS)-B

GORDONSVILLE MUNI (GVE)

When local altimeter setting not received, use Orange County altimeter setting and increase all MDA 20 ft. DME/DME RNP-0.3 NA. Procedure NA at night. Helicopter visibility reduction below 1 SM NA.

MISSED APPROACH: Climbing left turn to 3000 direct MAZKO and hold.

AWOS-3 120.225	POTOMAC APP CON 132.85 323.125	UNICOM 123.0 (CTAF)
-------------------	-----------------------------------	------------------------



ELEV 454	228°		2300 x 50	
	228°		2300 x 50	
3000		MAZKO	Visual Segment - Obstacles.	
RW23		HAKON	BUTAY	
2000		2000	2600	
4.8 NM		5 NM		
CATEGORY	A	B	C	D
CIRCLING	1520-3	1066 (1100-3)	NA	