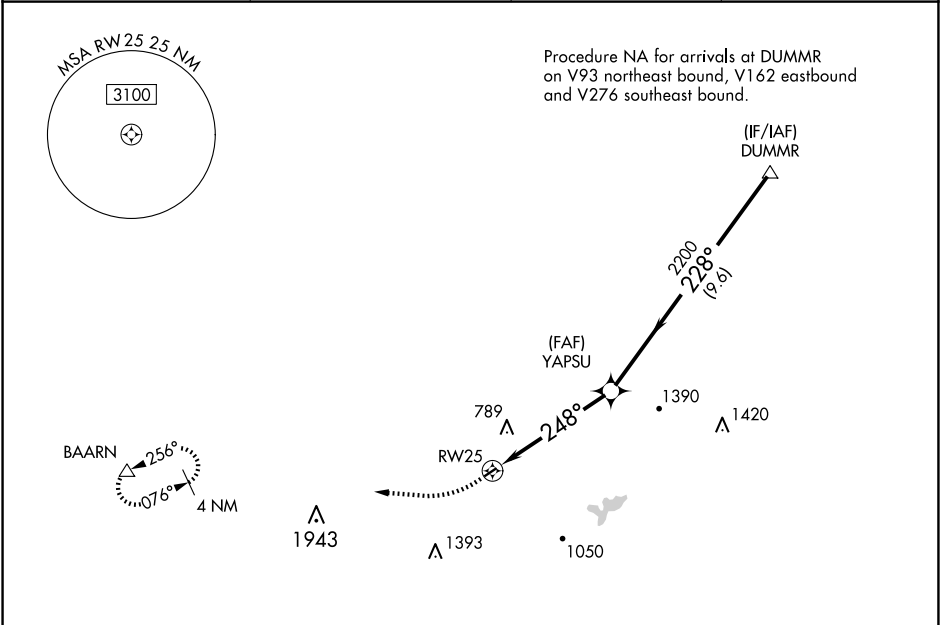


APP CRS	Rwy Idg	1899
248°	TDZE	547
	Apt Elev	550

RNAV (GPS) RWY 25
KELLER BROTHERS (Ø8N)

RNP APCH.	Procedure NA at night. Rwy 7 helicopter visibility reduction below 1 SM NA. Use Lancaster altimeter setting; when not received, use Reading altimeter setting and increase all MDA 40 feet.	MISSED APPROACH: Climbing right turn to 3000 direct BAARN and hold.
▼		
▲NA		

LNS ASOS 125.675	HARRISBURG APP CON 126.45 281.525	CTAF 122.9	121.9 0
---------------------	--------------------------------------	---------------	---------



ELEV 550	TDZE 547
----------	----------

