

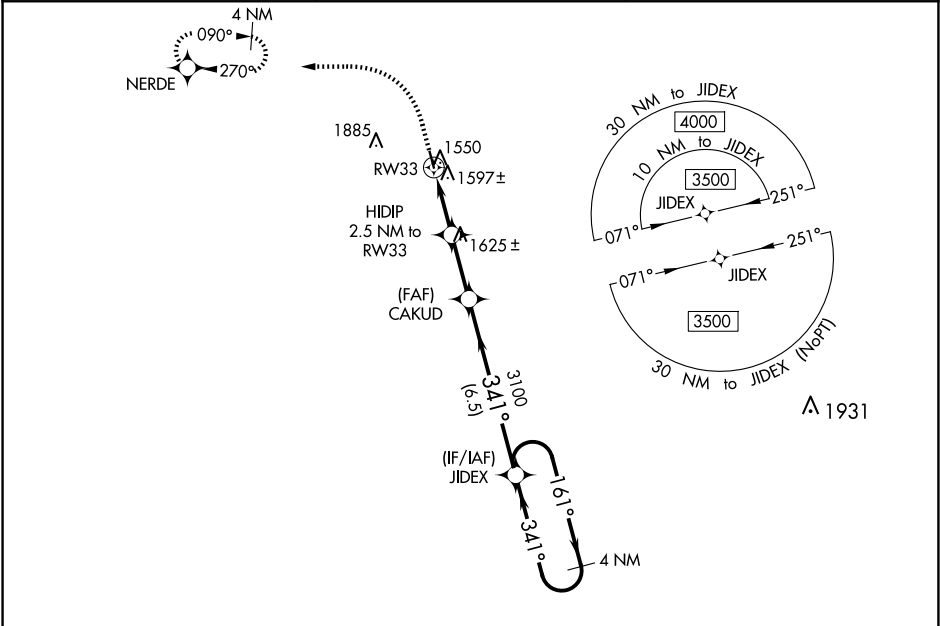
WAAS CH 53540 W33A	APP CRS 341°	Rwy Idg 3500 TDZE 1511 Apt Elev 1511
--	------------------------	---

RNAV (GPS) RWY 33

LAKOTA MUNI (5LØ)

RNP APCH - GPS.	MISSED APPROACH: Climb to 2300 then climbing left turn to 3300 direct NERDE and hold.
<div><div>▼</div><div>Baro-VNAV NA. Rwy 33 helicopter visibility reduction below ¾ SM NA.</div></div> <div><div>▲</div><div>NA Circling Rwy 15 NA at night. Use Devils Lake altimeter setting.</div></div>	

DVL AWOS-3PT 125.875	MINNEAPOLIS CENTER 132.15 269.6	UNICOM 122.8 (CTAF) Ø
--------------------------------	---	---------------------------------



ELEV 1511 TDZE 1511

5L

3500 X 60

33

341°

MIRL Rwy 15-33 Ø

R-5403

2300 3300 NERDE

VGSI and RNAV glidepath not coincident (VGSI Angle 3.00/TCH 26).

HIDIP 2.5 NM to RW33

CAKUD 3100

JIDEX 3500

4 NM Holding Pattern

GP 3.00° TCH 40

2340

2.5 NM 2.4 NM 6.5 NM

CATEGORY	A	B	C	D
LPV DA	1827-1⅛	316 (400-1⅛)		NA
LNAV/VNAV DA	1827-1⅛	316 (400-1⅛)		NA
LNAV MDA	1920-1	409 (500-1)	1920-1⅛ 409 (500-1⅛)	NA
CIRCLING	2080-1 569 (600-1)	2200-1 689 (700-1)	2320-2¼ 809 (900-2¼)	NA

NC-1, 10 JUL 2025 to 07 AUG 2025

NC-1, 10 JUL 2025 to 07 AUG 2025