

APP CRS
176°

Rwy Ldg
TDZE
842

Apt Elev
842

RNAV (GPS) RWY 18
NEW LONDON (W90)

RNP APCH.

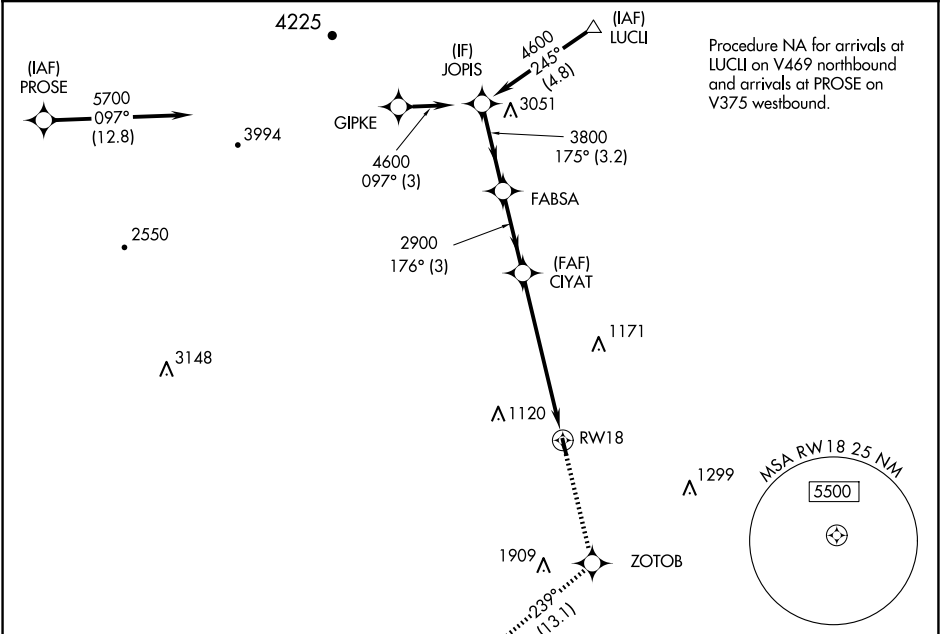
▼

NA

Rwy 18 helicopter visibility reduction below 1 SM NA. Procedure NA at night. Use Lynchburg altimeter setting.

MISSED APPROACH: Climb to 4000 direct ZOTOB and on track 239° to AYARA and hold.

LYH ASOS 119.8	ROANOKE APP CON 135.0 254.325	UNICOM 122.8 (CTAF)
-------------------	----------------------------------	------------------------



ELEV 842

TDZE 842

CATEGORY	A	B	C	D
LNAV MDA	1860-3	1018 (1100-3)	NA	NA
CIRCLING	1860-3	1018 (1100-3)	NA	NA