

WAAS CH 72815 W19A	APP CRS 193°	Rwy Idg 8000 TDZE 74 Apt Elev 75
--	------------------------	---

RNAV (GPS) RWY 19L

BRUNSWICK EXEC (BXM)

RNP APCH - GPS.

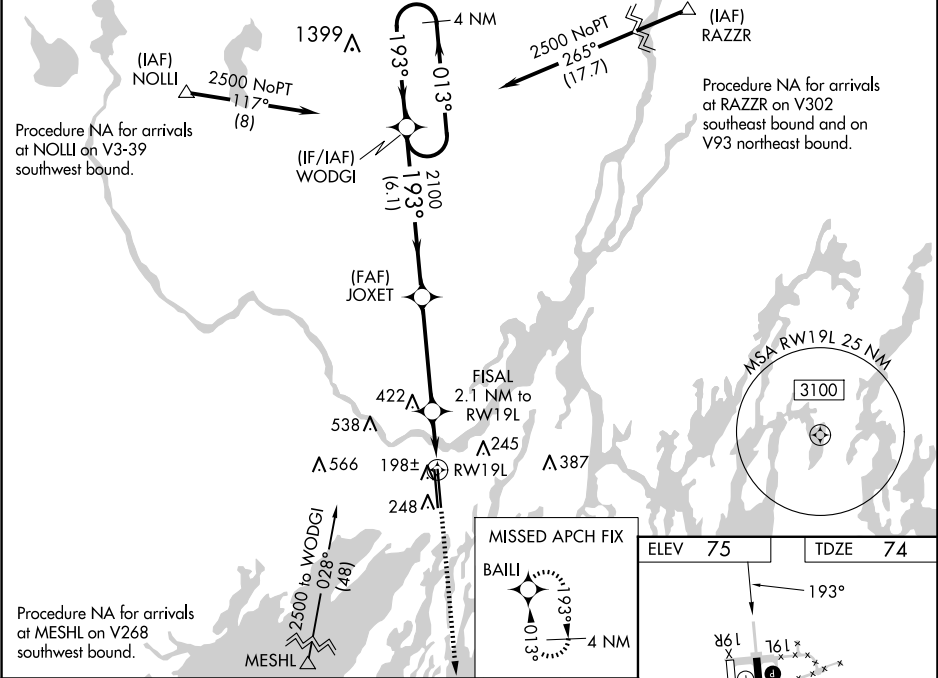
▼

NA

For uncompensated Baro-VNAV systems, LNAV/VNAV NA below -1.5°C or above 43°C. Inop table does not apply to LPV all Cats. Rwy 19L helicopter visibility reduction below ¾ SM NA. Baro-VNAV and VDP NA with Portland altimeter setting. When local altimeter setting not received, use Portland altimeter setting: increase LPV DA to 382 feet and all visibilities ¼ SM; increase LNAV/VNAV DA to 410 feet and all visibilities ¼ SM; increase all MDA 60 feet and LNAV and Circling Cats C/D ¼ SM.

MISSED APPROACH:
Climb to 2000 direct
BAILI and hold.

AWOS-3PT 134.875	PORTLAND APP CON ★ (112°-292°) 119.75 269.35 (293°-111°) 120.4 299.2	CLNC DEL 123.65	UNICOM 122.725 (CTAF) 0
----------------------------	---	---------------------------	--



4 NM Holding Pattern		WODGI	JOXET	FISAL	2.1 NM to RW19L	2000	BAILI
2500		013°	193°	793°	2100	*1.1 NM to RW19L	*LNAV only.
GP 3.00°		TCH 53	2100	*780			
		6.1 NM	4.1 NM	1 NM	1.1 NM		
CATEGORY		A	B	C	D		
LPV DA			331-¾	257 (300-¾)			
LNAV/VNAV DA			359-⅞	285 (300-⅞)			
LNAV MDA		460-1	386 (400-1)	460-1½	386 (400-1½)		
CIRCLING		560-1	485 (500-1)	840-2¼ 765 (800-2¼)	840-2½ 765 (800-2½)		

