

SEWARD, ALASKA

AL-10600 (FAA)

25163

APP CRS 166°	Rwy Ldg TDZE Apt Elev	N/A N/A 28
------------------------	-----------------------------	---------------------------------------

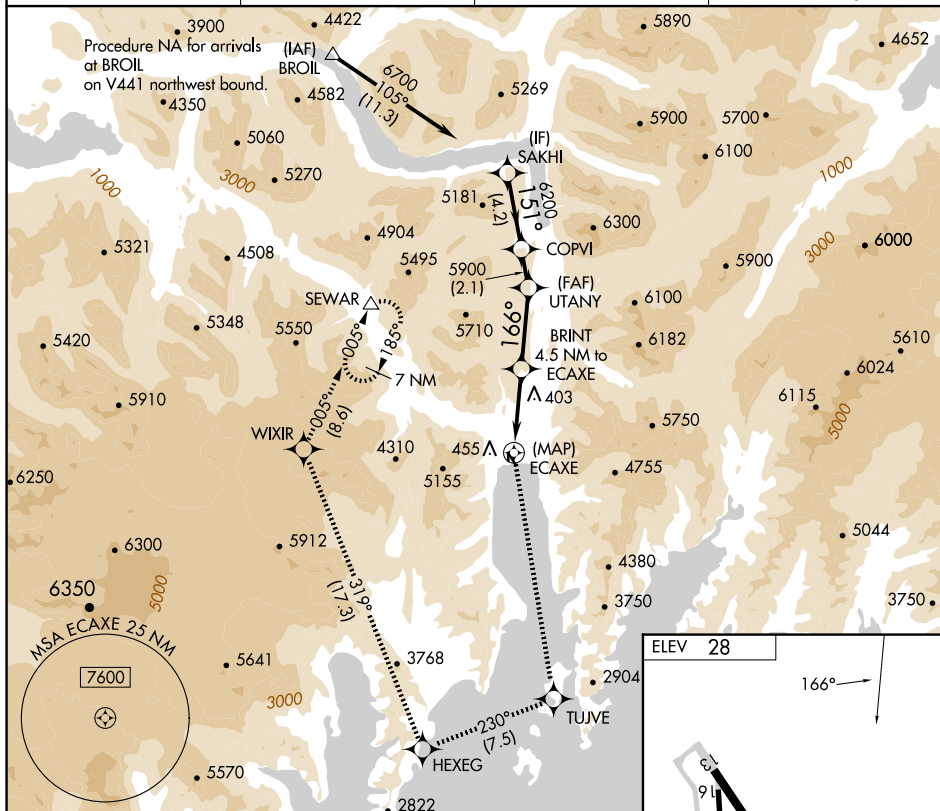
RNAV (GPS)-A
SEWARD (SWD) (PAWD)

RNP APCH-GPS

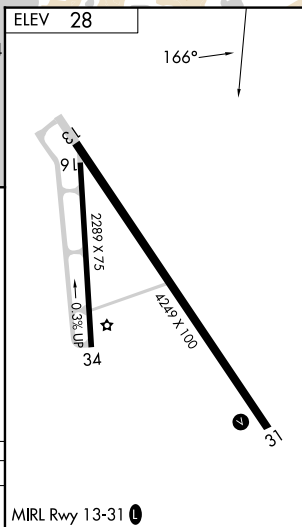
T When local altimeter setting not received, procedure NA.
A Circling NA southwest Rwy 13 and west of Rwy 34.
☼ Procedure NA at night. Rwy 13, 16, 31 and 34 helicopter
 visibility reduction below 1 SM NA.

MISSED APPROACH: Climb to 9500 direct TUJVE and on track 230° to HEXEG and on track 319° to WIXIR and on track 005° to SEWAR and hold.

ASOS 135.2	ANCHORAGE CENTER 119.7 269.0	KENAI RADIO 122.6	CTAF 122.9
----------------------	--	-----------------------------	----------------------



9500 ↑	TUJVE ✦	tr 230° ✦	HEXEG tr 319° ✦	WIXIR tr 005° ✦	SEWAR △	SAKHI
CATEGORY	A		B		C	D
CIRCLING	2660-1¼ 2632 (2700-1¼)		2660-1½ 2632 (2700-1½)		NA	



SEWARD, ALASKA
Orig-B 17JUN21

60°08'N-149°25'W

SEWARD (SWD) (PAWD)
RNAV (GPS)-A

AK, 12 JUN 2025 to 07 AUG 2025