

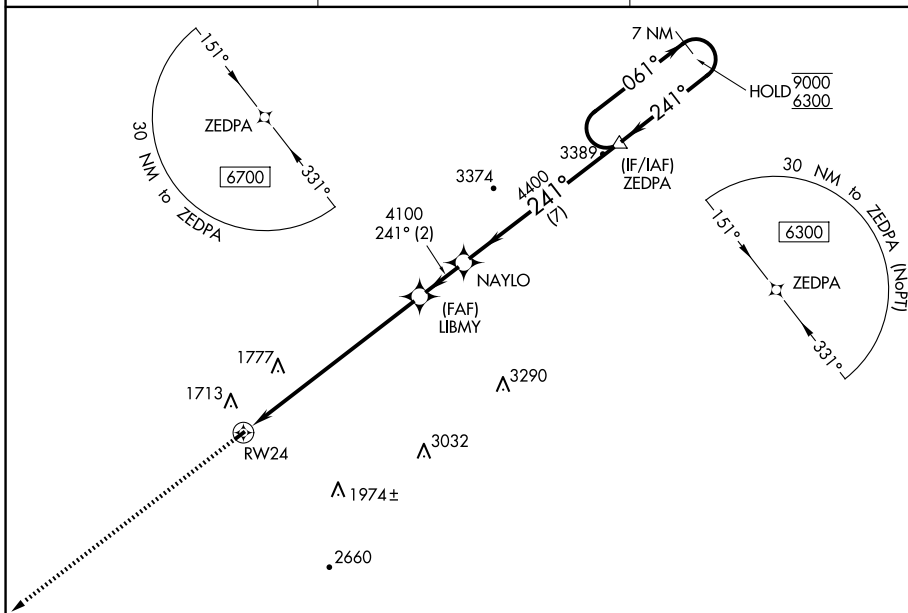
22363

RNAV (GPS) RWY 24
EAGLE'S NEST (W13)

T
A NA Procedure NA at night. Rwy 24 helicopter visibility reduction below 1 SM NA.

MISSED APPROACH: Climb to 6700 direct OBEPE and hold, continue climb-in-hold to 6700.

POTOMAC APP CON
132.85 323.125

UNICOM
123.05 (CTAF) **L**

3851

3970

6700

OBEPE
△

Visual Segment - Obstacles.

NAYLO

ZEDPA

7 NM
Landing Pattern

RW24

[illegible]

4400

1

$$\begin{array}{r} 9000 \\ 6300 \end{array}$$

[illegible]

--	--

111	
-----	--

CATEGORY

A

	B
--	---

C	
---	--

INAV MD.

2640-3

1204 (1300-3)

NA

 CIRCUM

2640-3

1204 (1300-3)

NA

MIRL Rwy 6-24 L

EAGLE'S NEST (W13)

38°05'N-78°57'W

RNAV (GPS) RWY 24

NE-3, 10 JUL 2025 to 07 AUG 2025