

WAAS CH 70439 W17A	APP CRS 170°	Rwy Idg TDZE Apt Elev	4500 2086 2086
--	------------------------	-----------------------------	---

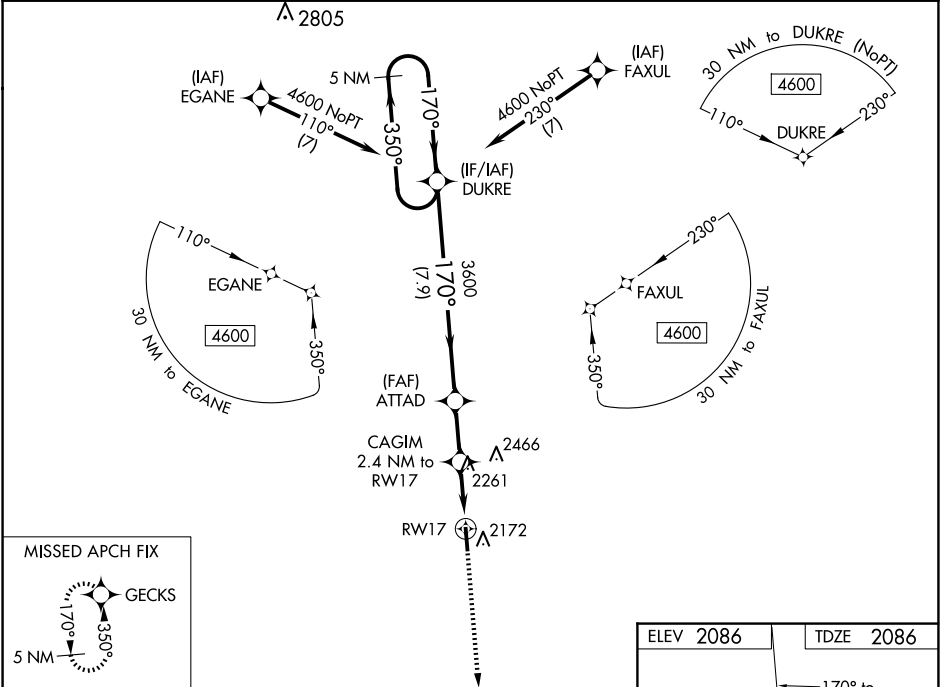
RNAV (GPS) RWY 17

COMANCHE COUNTY (3K8)

Baro-VNAV NA when using Pratt altimeter setting. DME/DME RNP-0.3 NA. When local altimeter setting not received, use Pratt altimeter setting and increase LPV and LNAV/VNAV DA to 2558; increase all MDA 120 feet; increase LPV and LNAV/VNAV all Cats visibility ¼ SM, increase LNAV Cat C visibility ¼ SM, and increase Circling Cat C visibility ½ SM.

MISSED APPROACH: Climb to 4600 direct GECKS and hold.

AWOS-3PT 118.05	KANSAS CITY CENTER 126.95 379.2	CTAF 122.9 0
---------------------------	---	------------------------



5 NM Holding Pattern		DUKRE	ATTAD	CAGIM 2.4 NM to RWY 17	RWY 17
4600		350°	170°	3600	*2880
GP 3.00°		TCH 40			
7.9 NM		2.2 NM		2.4 NM	
CATEGORY	A	B	C	D	
LPV DA	2447-1½		361 (400-1½)	NA	
LNAV/VNAV DA	2447-1½		361 (400-1½)	NA	
LNAV MDA	2640-1	554 (600-1)	2640-1½ 554 (600-1½)	NA	
CIRCLING	2640-1	554 (600-1)	2940-2½ 854 (900-2½)	NA	

