

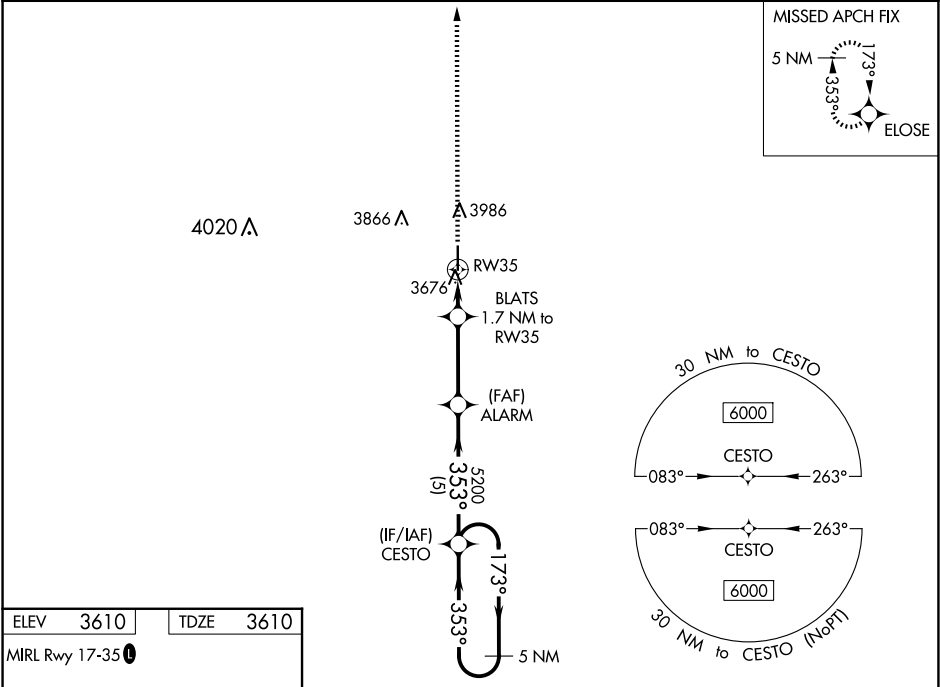
WAAS CH <b>99537</b> <b>W35A</b>	APP CRS <b>353°</b>	Rwy Idg TDZE Apt Elev	<b>5007</b> <b>3610</b> <b>3610</b>
--	------------------------	-----------------------------	---

RNAV (GPS) RWY 35

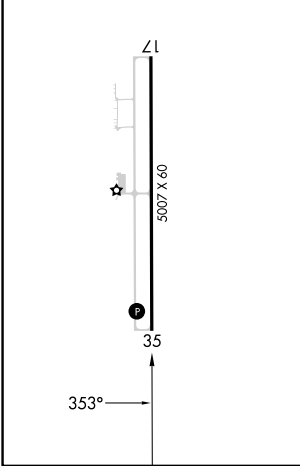
TRIBUNE MUNI (5K2)

<div><div>▼</div><div>▲ NA</div></div> <div>Baro-VNAV NA when using Syracuse altimeter setting. For uncompensated Baro-VNAV systems, LNAV/VNAV NA below -22°C (-7°F) or above 54°C (130°F). DME/DME RNP-0.3 NA. VDP NA with Syracuse altimeter setting. When local altimeter setting not received, use Syracuse altimeter setting and increase all DA 103 feet and all MDA 120 feet, increase LPV/LNAV/VNAV visibility ¼ mile all Cats, and LNAV visibility Cat C ¾ mile and Circling visibility Cat C ¼ mile.</div>	MISSED APPROACH: Climb to 6000 direct ELOSE and hold.
--	--

AWOS-3PT <b>119.075</b>	DENVER CENTER <b>133.4 377.175</b>	UNICOM <b>122.8 (CTAF)</b>
----------------------------	---------------------------------------	-------------------------------



ELEV 3610	TDZE 3610
-----------	-----------



6000	ELOSE	BLATS 1.7 NM to RW35	ALARM	CESTO	5 NM Holding Pattern
* LNAV only.		* 0.9 NM to RW35			
RW35		4180*	5200	353°	173°
0.9 NM	0.8 NM	3.2 NM	5 NM		
GP 3.00°					TCH 40
CATEGORY	A	B	C	D	
LPV DA	3860-1	250 (300-1)		NA	
LNAV/VNAV DA	3860-1	250 (300-1)		NA	
LNAV MDA	3940-1	330 (400-1)		NA	
CIRCLING	4300-1	690 (700-1)	4300-2	690 (700-2)	NA