

WAAS CH <b>72942</b> <b>W20A</b>	APP CRS <b>203°</b>	Rwy ldg <b>4000</b> TDZE <b>782</b> Apt Elev <b>782</b>
--	------------------------	---

RNAV (GPS) RWY 20

LEITCHFIELD-GRAYSON COUNTY (M20)

RNP APCH.

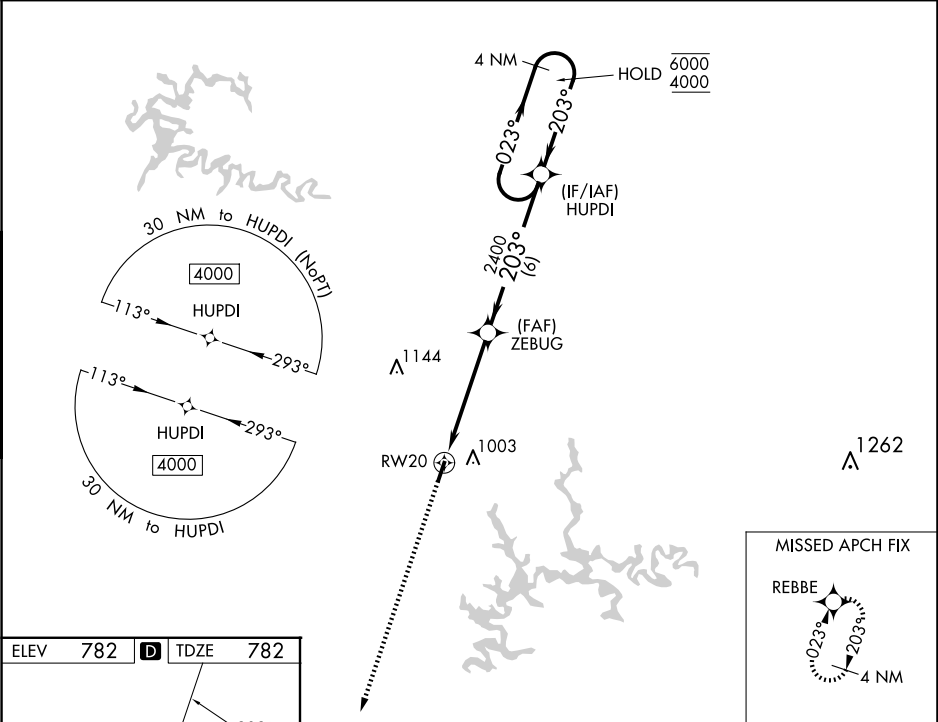
▼

NA

Rwy 20 helicopter visibility reduction below 1 SM NA.  
Baro-VNAV NA. Use Elizabethtown altimeter setting.  
Straight-in Rwy 20 NA at night, Circling Rwy 20 NA at night.

MISSED APPROACH: Climb to 4000 direct REBBE and hold,  
continue climb-in-hold to 4000.

EKX AWOS-3 <b>121.025</b>	INDIANAPOLIS CENTER <b>121.175 353.65</b>	UNICOM <b>123.0 (CTAF) 0</b>
------------------------------	--	---------------------------------



ELEV 782	<b>D</b>	TDZE 782
----------	----------	----------

LPV DA	1088-1		306 (400-1)	NA
LNAV/VNAV DA	1145-1		363 (400-1)	NA
LNAV MDA	1320-1	538 (600-1)	1320-1½ 538 (600-1½)	NA
<b>C</b> CIRCLING	1380-1	598 (600-1)	1380-1½ 598 (600-1½)	NA

4000		REBBE	VGSI and RNAV glidepath not coincident (VGSI angle 3.00/TCH 26).		4 NM
			HUPDI Holding Pattern		
		ZEBUG	2400		GP 3.00° TCH 53
4.9 NM		6 NM			
CATEGORY	A	B	C	D	
LPV DA	1088-1		306 (400-1)	NA	
LNAV/VNAV DA	1145-1		363 (400-1)	NA	
LNAV MDA	1320-1	538 (600-1)	1320-1½ 538 (600-1½)	NA	
<b>C</b> CIRCLING	1380-1	598 (600-1)	1380-1½ 598 (600-1½)	NA	