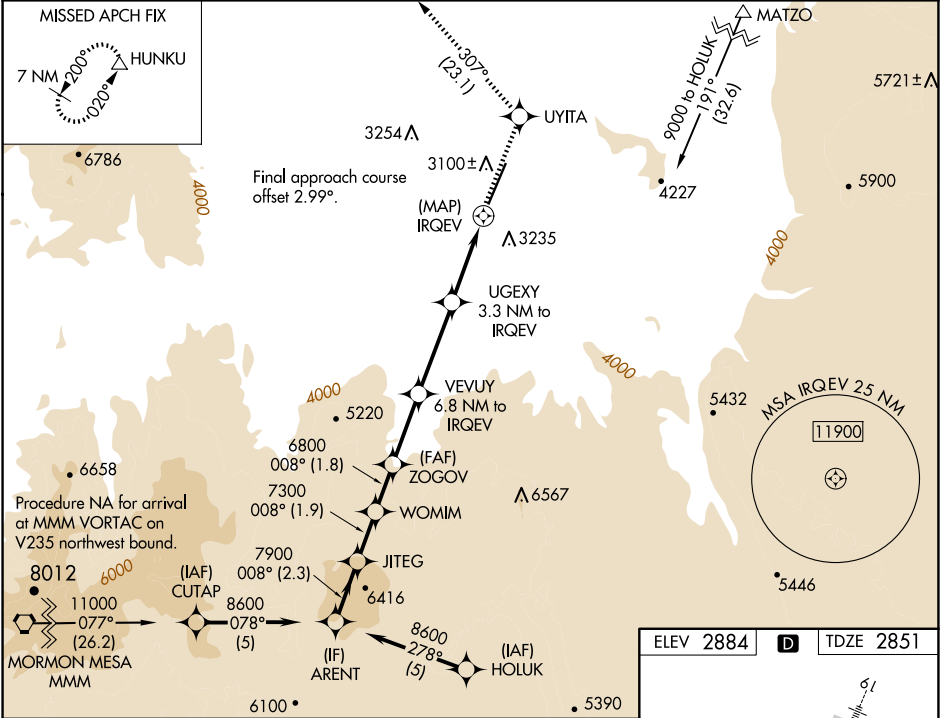


WAAS CH 50220 W01A	APP CRS 008°	Rwy Ldg TDZE Apt Elev	9300 2851 2884
--	------------------------	-----------------------------	---

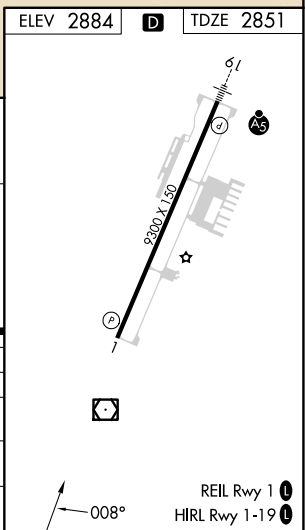
RNAV (GPS) RWY 1
ST GEORGE RGNL (SGU)

RNP APCH-GPS. ▼ Helicopter visibility reduction below 1 SM NA. ▲ # Missed approach requires a minimum climb of 225 feet per NM to 6800. ✱ -6°C † Missed approach requires a minimum climb of 220 feet per NM to 6700.	MISSED APPROACH: Climb to 9800 direct UYITA and on track 307° to HUNKU and hold, continue climb-in-hold to 9800.
--	--

AWOS-3PT 135.075	LOS ANGELES CENTER 124.2 343.6	CLNC DEL 133.3	UNICOM 123.075 (CTAF) 0
----------------------------	--	--------------------------	--



ARENT		VGS1 and RNAV glidepath not coincident (VGS1 Angle 3.00 /TCH 50).		9800	UYITA	tr	HUNKU
JITEG		WOMIM	ZOGOV	VEVUY	UGEXY	* LNAV only.	
8600		7900	7300	6800	3.3 NM to IRQEV	307°	
GP 3.60°		6800	*5700	*4340	IRQEV	Δ	
TCH 60		2.3 NM	1.9 NM	1.8 NM	2.7 NM	3.5 NM	3.3 NM
CATEGORY	A		B		C		D
LPV	DA#		3170-1		319 (300-1)		NA
LNAV	MDA †		3340-1		489 (500-1)		NA
LNAV	MDA		3760-1¼		909 (900-1¼)		NA
CIRCLING	3760-1¼		3800-1¼		3860-3		NA
876 (900-1¼)		916 (1000-1¼)		976 (1000-3)			



SW-4, 10 JUL 2025 to 07 AUG 2025

SW-4, 10 JUL 2025 to 07 AUG 2025