

LOC/DME I-SGU	APP CRS	Rwy Ldg	9300
110.9	198°	TDZE	2884
Chan 46		Apt Elev	2884

LDA RWY 19  
ST GEORGE RGNL (SGU)

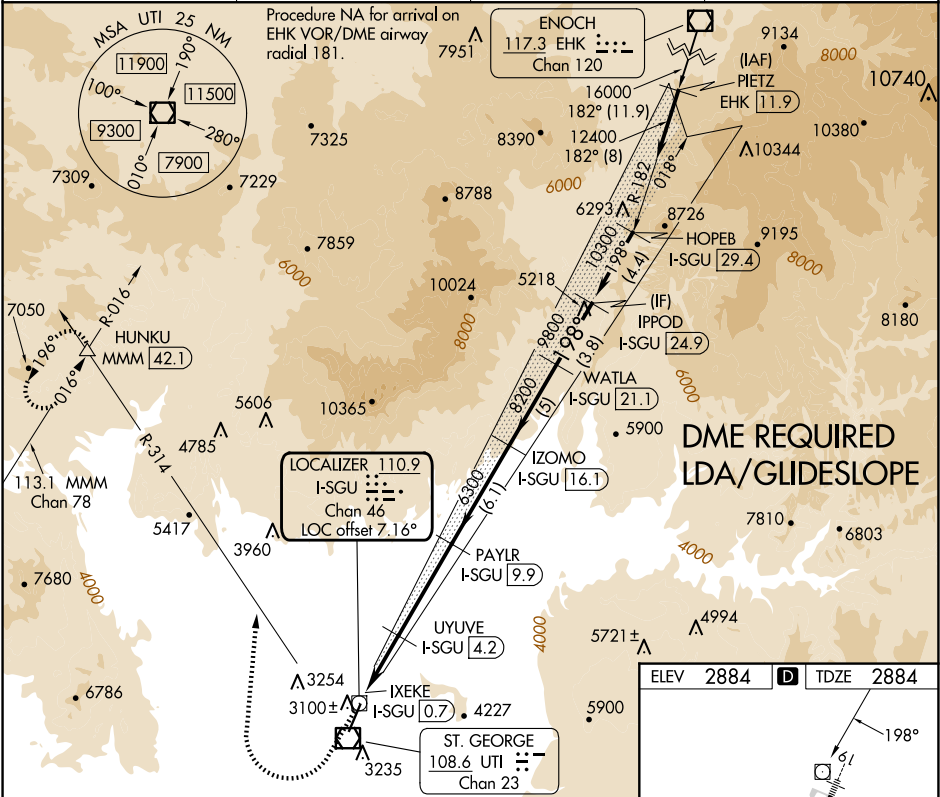
**V** NA  
**AS** -6°C

DME required. For inop ALS, increase S-LDA/GS 19 all Cats visibility to 7/5 SM.

**MALSR**

**MISSED APPROACH:** Climb to 4200 then climbing right turn to 9800 on heading 354° and UTI VOR/DME R-314 to HUNKU INT/ MMM 42.1 DME and hold, continue climb-in-hold to 9800.

AWOS-3PT 135.075	LOS ANGELES CENTER 124.2 343.6	CLNC DEL 133.3	UNICOM 123.075 (CTAF) <b>1</b>
---------------------	-----------------------------------	-------------------	-----------------------------------



4200 9800

↑ hdg 354°

UTI R-314

HUNKU

Use I-SGU DME when on the localizer course.

\*LDA only.

IXEKE I-SGU [0.7]

UYUVE I-SGU [4.2]

PAYLR I-SGU [9.9]

IZOMO I-SGU [16.1]

WATLA I-SGU [21.1]

IPPOD I-SGU [24.9]

LOC unusable inside 0.7 DME.

GS 3.10° TCH 55

CATEGORY	A	B	C	D
S-LDA/GS 19	3170-1/2 286 (300-1/2)			
S-LDA 19	3940-3/4 1056 (1100-3/4)	3940-1 1056 (1100-1)	3940-2 1/2 1056 (1100-2 1/2)	
CIRCLING	3940-1 1/4 1056 (1100-1 1/4)	3940-1 1/2 1056 (1100-1 1/2)	3940-3 1056 (1100-3)	4660-3 1776 (1800-3)

ELEV 2884 **D** TDZE 2884

198°

2300 X 150

REIL Rwy 1 **1**  
HRL Rwy 1-19 **1**

SW-4, 10 JUL 2025 to 07 AUG 2025

SW-4, 10 JUL 2025 to 07 AUG 2025