

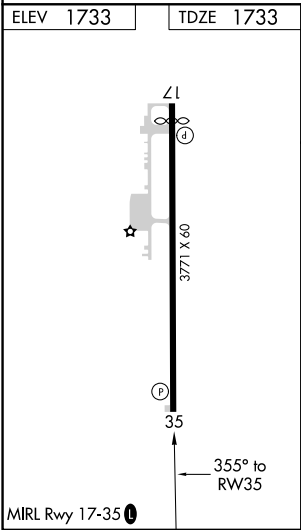
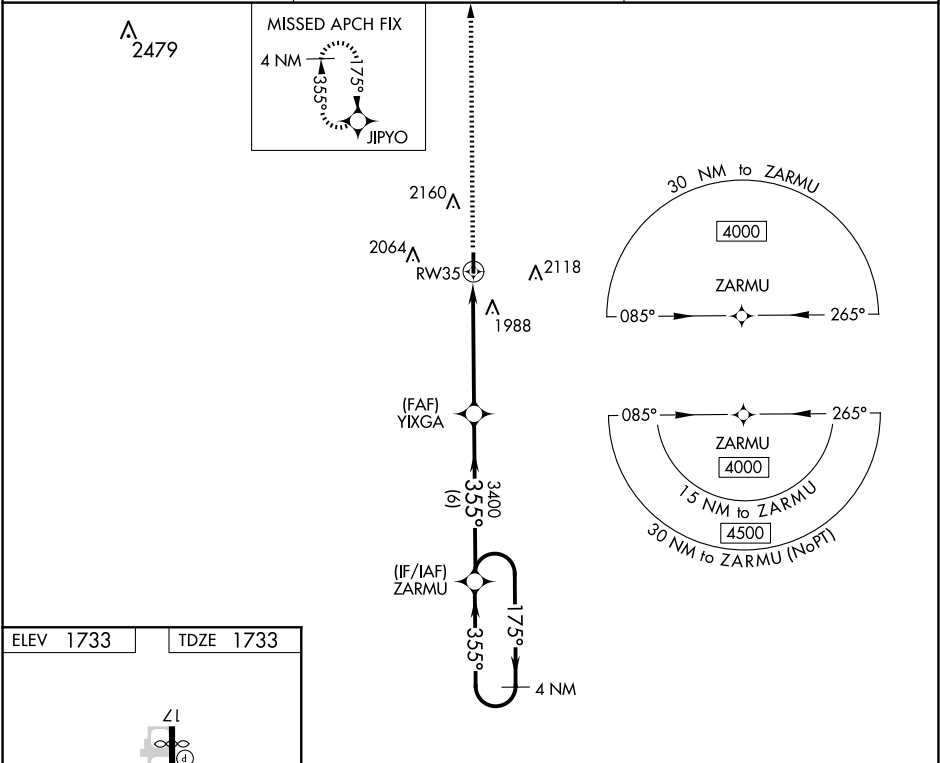
WAAS CH 65736 W35A	APP CRS 355°	Rwy Idg TDZE 1733 Apt Elev 1733
--	------------------------	---





RNAV (GPS) RWY 35
THOMAS MUNI (104)

Baro-VNAV NA. Use Weatherford altimeter setting; when not received, use Clinton Rgnl altimeter setting. DME/DME RNP-0.3 NA. Night landing: Rwy 17 operational VGSi required, remain on or above VGSi glidepath until threshold. Helicopter visibility reduction below 1 SM NA.

MISSED APPROACH: Climb to 4000 direct JIPYO and hold.

OJA AWOS-3 118.575	FORT WORTH CENTER 128.4 269.37	CTAF 122.9
------------------------------	--	----------------------



4000	JIPYO				
					
					
CATEGORY	A	B	C	D	
LPV DA	2035-1	302 (400-1)	NA		
LNNAV/VNAV DA	2035-1	302 (400-1)	NA		
LNNAV MDA	2220-1	487 (500-1)	NA		
 CIRCLING	2280-1 547 (600-1)	2460-1 727 (800-1)	NA		