

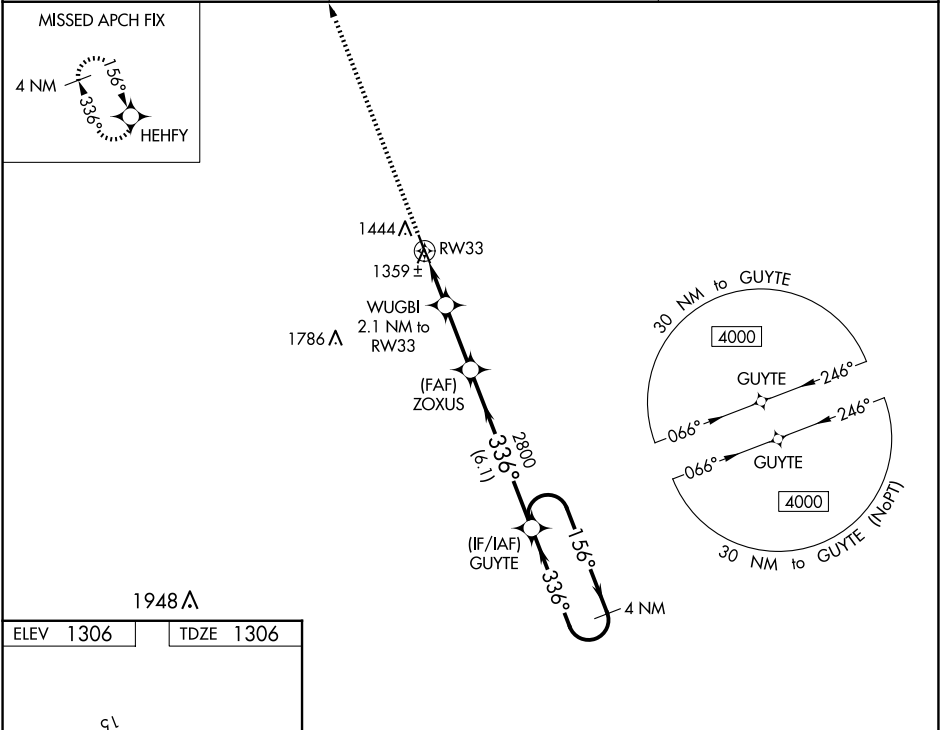
WAAS CH <b>63032</b> <b>W33A</b>	APP CRS <b>336°</b>	Rwy Idg TDZE Apt Elev	<b>3501</b> <b>1306</b> <b>1306</b>
--	------------------------	-----------------------------	---

RNAV (GPS) RWY 33

TECUMSEH MUNI (ØG3)

RNP APCH.	MISSED APPROACH: Climb to 4000 direct HEHFY and hold.
▼ ▲ NA	Baro-VNAV NA. Use Nebraska City altimeter setting, when not received, use Beatrice altimeter setting and increase all DA 3 feet and all MDA 20 feet.

AFK AWOS-3PT <b>128.325</b>	MINNEAPOLIS CENTER <b>126.4 317.7</b>	CTAF <b>122.9 0</b>
--------------------------------	--	------------------------



4000 ↑ HEHFY	WUGBI 2.1 NM to RW33	ZOXUS 2800	GUYTE 4 NM Holding Pattern 156° 336° 4000	GP 3.00° TCH 40
* LNAV only	RW33	2000*	2800	
	2.1 NM	2.5 NM	6.1 NM	
CATEGORY	A	B	C	D
LPV DA	1569-1	263 (300-1)	NA	
LNAV/VNAV DA	1619-1	313 (400-1)	NA	
LNAV MDA	1680-1	374 (400-1)	NA	

NC-2, 10 JUL 2025 to 07 AUG 2025

NC-2, 10 JUL 2025 to 07 AUG 2025