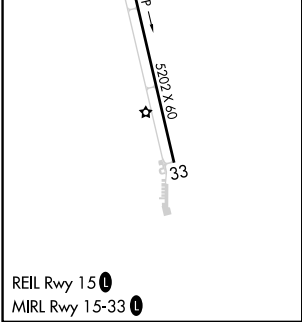
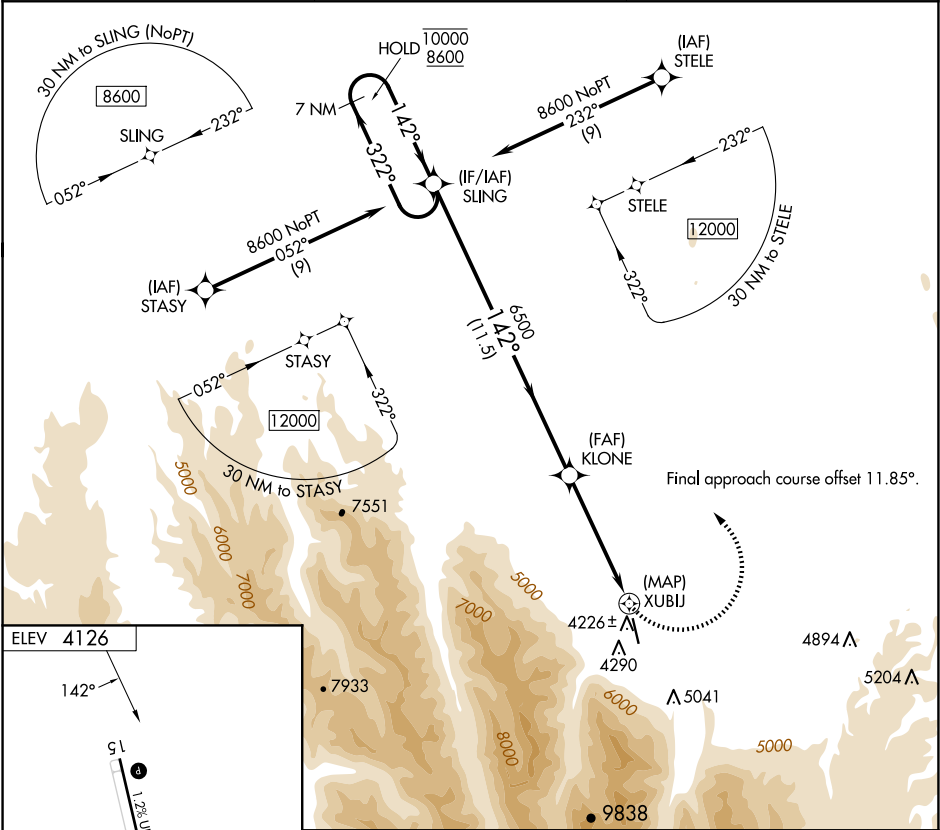


APP CRS	Rwy Ldg	N/A
142°	TDZE	N/A
	Apt Elev	4126

RNAV (GPS)-A
JOSEPH STATE (JSY)

RNP APCH - GPS.	MISSED APPROACH: Climbing left turn to 8600 direct SLING and hold, continue climb-in-hold to 8600.
▼ Circling NA southwest of Rwy 15-33. ▲ Procedure NA at night. Rwy 15 and 33 helicopter visibility reduction below 1 SM NA.	

AWOS-3P 123.775	SEATTLE CENTER 123.95 290.55	UNICOM 122.8 (CTAF) 1
--------------------	---------------------------------	--------------------------



7 NM Holding Pattern		SLING	KLONE	XUBIJ
10000 ← 322°		8600	6500	
8600		142°	4.00° TCH 43	
		11.5 NM	5.1 NM	
CATEGORY	A	B	C	D
CIRCLING	5000-1¼ 874 (900-1¼)	5480-1½ 1354 (1400-1½)	NA	