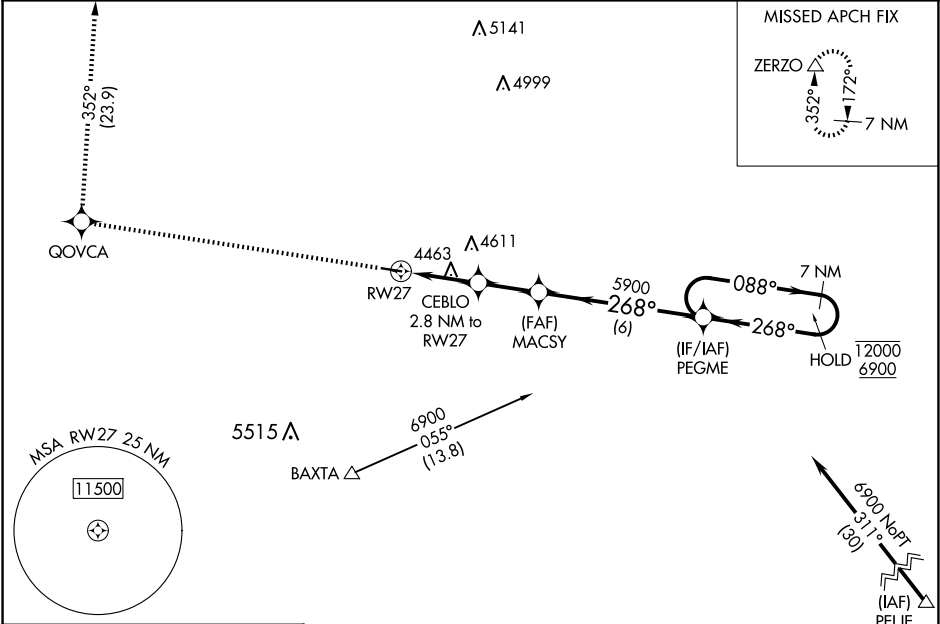


WAAS CH 62943 W27A	APP CRS 268°	Rwy Idg 4200 TDZE 4295 Apt Elev 4312
--	------------------------	---

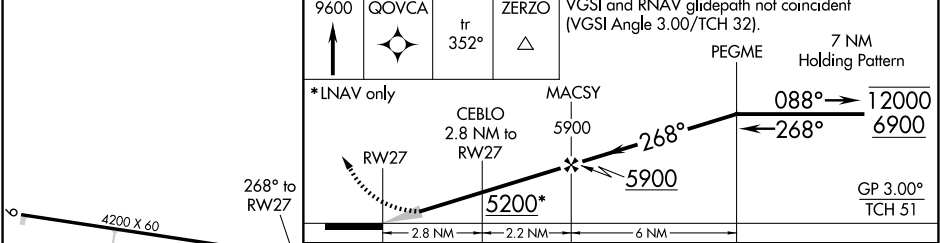
RNAV (GPS) RWY 27
WHEATLAND COUNTY AT HARLOWTON (HWQ)

RNP APCH.	MISSED APPROACH: Climb to 9600 direct QOVCA and on track 352° to ZERZO and hold. # Missed approach requires minimum climb of 220 feet per NM to 9200.
NA	Circling Rwy 9 NA at night. Baro-VNAV NA. Use Lewistown altimeter setting.

LWT ASOS 118.375	SALT LAKE CENTER 127.75 351.9	CTAF 122.9
----------------------------	---	----------------------



ELEV 4312	TDZE 4295
------------------	------------------



9600	QOVCA	tr 352°	ZERZO	VGSI and RNAV glidepath not coincident (VGSI Angle 3.00/TCH 32).
*LNAV only				
RWY 27		CEBLO 2.8 NM to RWY 27	MACSY 5900	PEGME 7 NM Holding Pattern
2.8 NM		2.2 NM	6 NM	
GP 3.00° TCH 51				

CATEGORY	A	B	C	D
LPV DA#	4606-1	311 (300-1)	NA	
LPV DA	4950-1⅞	655 (700-1⅞)	NA	
LNAV/VNAV DA	4999-2	704 (700-2)	NA	
LNAV MDA	5140-1 845 (900-1)	5140-1¼ 845 (900-1¼)	NA	
CIRCLING	5140-1¼	828 (900-1¼)	NA	