

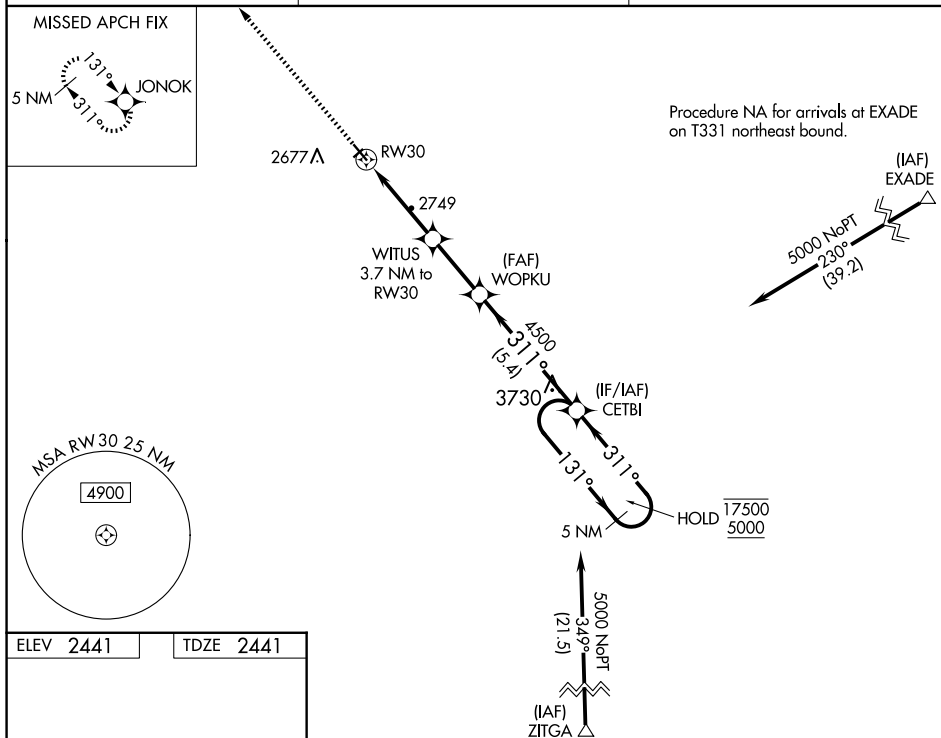
22027

# RNAV (GPS) RWY 30

## CIRCLE TOWN COUNTY (4U6)

**MISSED APPROACH:** Climb to 5000 direct JONOK and hold, continue climb-in-hold to 5000.

**T**  
**A** NA

UNICOM  
122.8 (CTAF) **L**

5000 JONOK VGSI and RNAV glidepath not coincident (VGSI Angle 3.00/TCH 21).

5 NM Holding Pattern

131° 17500  
311° 5000

GP 3.00°  
TCH 52

CATEGORY	A	B	C	D
LPV DA	2691-1	250 (300-1)		
RNAV/VNAV DA	2974-1½	533 (600-1½)		
RNAV MDA	3000-1 559 (600-1)	3000-1½ 559 (600-1½)		

CIRCLE TOWN COUNTY (4U6)  
RNAV (GPS) RWY 30

NW-1, 10 JUL 2025 to 07 AUG 2025