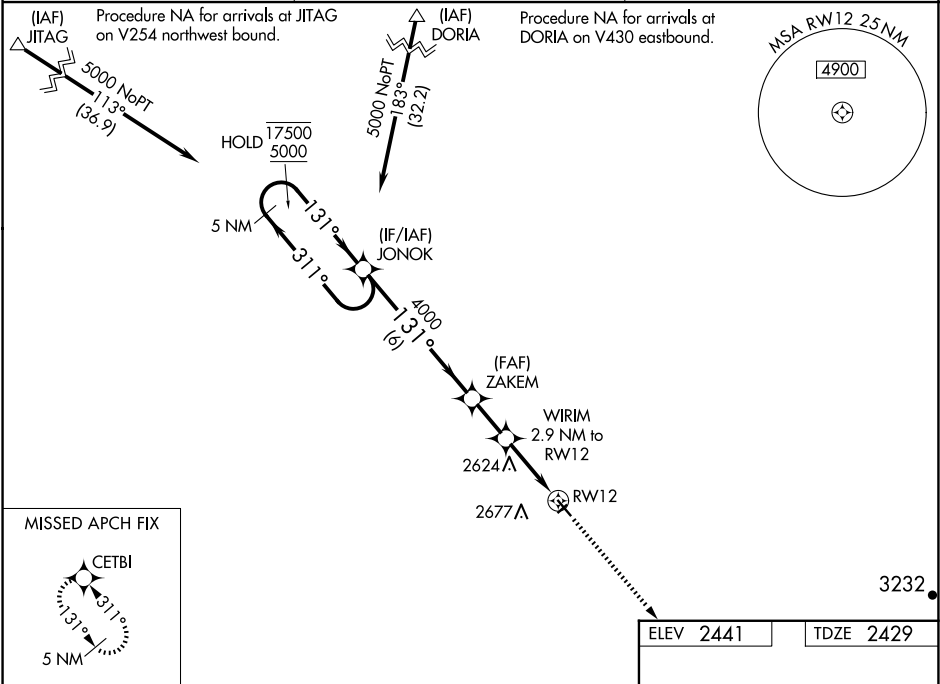


WAAS CH 86930 W12A	APP CRS 131°	Rwy Idg TDZE 2429 Apt Elev 2441
--	------------------------	---

RNAV (GPS) RWY 12
CIRCLE TOWN COUNTY (4U6)

RNP APCH-GPS. ▼ Rwy 12 helicopter visibility reduction below ¾ SM NA. For uncompensated ▲ NA Baro-VNAV systems, LNAV/VNAV NA below -19°C or above 54°C. Circling NA to Rwys 3 and 21.	MISSED APPROACH: Climb to 5000 direct CETBI and hold.
--	--

AWOS-2 119.025	SALT LAKE CENTER 126.85 305.2	UNICOM 122.8 (CTAF) 0
--------------------------	---	---------------------------------



5 NM Holding Pattern		JONOK		VGSI and RNAV glidepath not coincident (VGSI Angle 3.00/TCH 25).		5000	CETBI
17500 ← 311°		5000 → 131°		131°		4000	
GP 3.00°		TCH 52		4000		3400	
		6 NM		1.9 NM		1.6 NM	1.3 NM
CATEGORY	A	B	C	D			
LPV DA	2679-1		250 (300-1)				
LNAV/VNAV DA	2850-1¼		421 (500-1¼)				
LNAV MDA	2880-1 451 (500-1)		2880-1¾ 451 (500-1¾)				
CIRCLING	2940-1 499 (500-1)		3020-1 579 (600-1)		3060-1¾ 619 (700-1¾)		3320-2¾ 879 (900-2¾)

131° to RWY 12

0.15 Up

2280 X 195

4100 X 75

30

12

MIRL Rwy 12-30 0

NW-1, 10 JUL 2025 to 07 AUG 2025

NW-1, 10 JUL 2025 to 07 AUG 2025