

PARIS, IDAHO

AL-10475 (FAA)

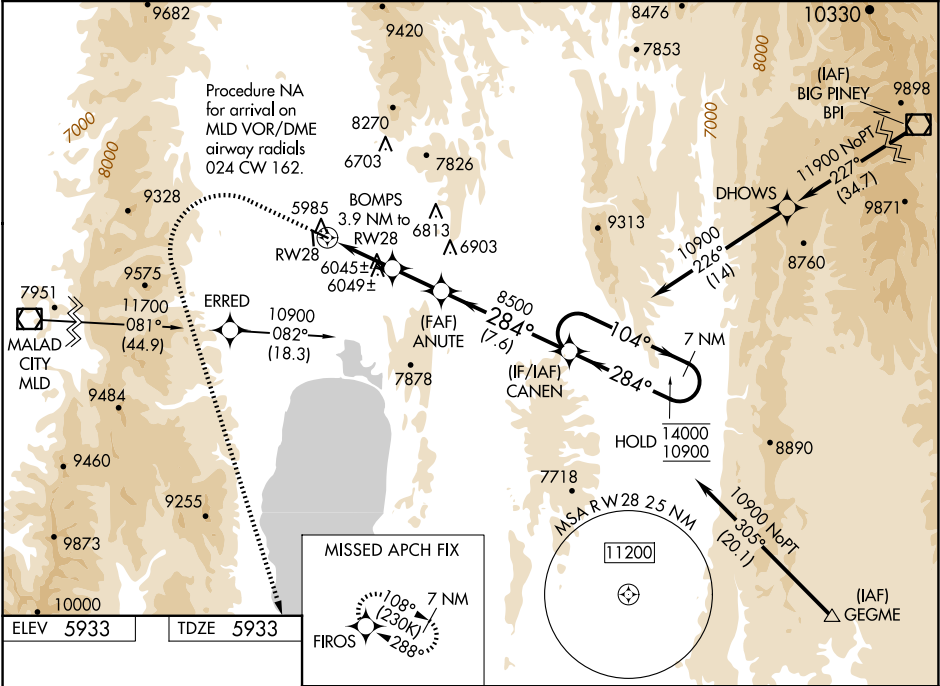
25163

WAAS CH 62842 W28A	APP CRS 284°	Rwy Ldg TDZE Apt Elev 5728 5933 5933
--	------------------------	--

RNAV (GPS) RWY 28
BEAR LAKE COUNTY (1U7)

RNP APCH - GPS.	MISSED APPROACH: (Do not exceed 185K until FIROS) Climb to 6560 then climbing left turn to 11000 direct FIROS and hold.
For uncompensated Baro-VNAV systems, LNAV/VNAV NA below -26°C or above 35°C.	

AWOS-3 118.525	SALT LAKE CENTER 128.35 239.25	UNICOM 122.8 (CTAF) 0
--------------------------	--	---------------------------------



ELEV 5933	TDZE 5933	MISSED APCH FIX			
		FIROS			
		6560 11000 FIROS			
		BOMPS 3.9 NM to RW28			
		ANUTE 8500			
		CANEN 7 NM Holding Pattern			
		14000 10900			
		GP 3.50° TCH 51			
		CATEGORY			
		A B C D			
		LPV DA 6305-1 372 (400-1)			
		LNAV/VNAV DA 6366-1¼ 433 (500-1¼)			
		LNAV MDA 6560-1 627 (700-1) 6560-1¼ 627 (700-1¼)			
		CIRCLING 6560-1 627 (700-1) 6720-2¼ 787 (800-2¼) 7140-3 1207 (1300-3)			

PARIS, IDAHO
Amdt 1A 20MAR25

42°15'N-111°20'W

BEAR LAKE COUNTY (1U7)
RNAV (GPS) RWY 28

NW-1, 10 JUL 2025 to 07 AUG 2025

NW-1, 10 JUL 2025 to 07 AUG 2025