

WAAS CH 65742 W10A	APP CRS 124°	Rwy Ldg TDZE Apt Elev 5728 5932 5933
--	------------------------	--

RNAV (GPS) RWY 10

BEAR LAKE COUNTY (1U7)

RNP APCH - GPS.

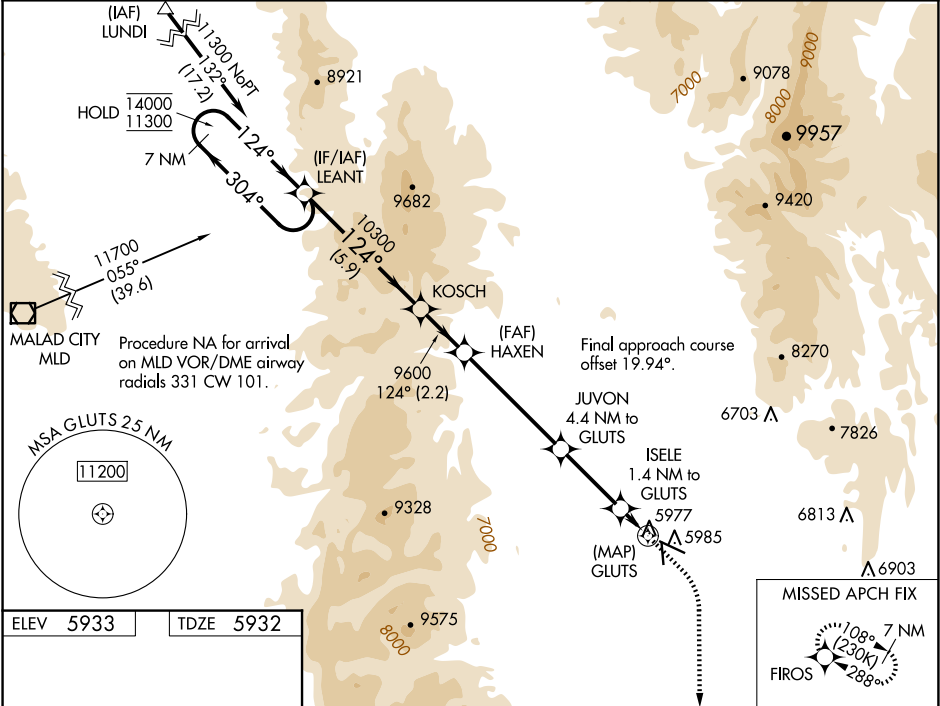
▼

▲

☒ -22°C

MISSED APPROACH: (Do not exceed 185K until FIROS)
Climb to 6340 then climbing right turn to 11000 direct FIROS and hold.

AWOS-3 118.525	SALT LAKE CENTER 128.35 239.25	UNICOM 122.8 (CTAF) 0
--------------------------	--	---------------------------------



ELEV 5933

TDZE 5932

7 NM Holding Pattern

LEANT

KOSCH

HAXEN

JUVON

ISELE

GLUTS

FIROS

14000

11300

10300

9600

7780

6660

6340

11000

304°

124°

124°

3.49°

1.4 NM

0.5

5.9 NM

2.2 NM

4.9 NM

3 NM

1.4 NM

0.5

CATEGORY	A	B	C	D
LP MDA	6240-1 308 (400-1)			
LNAV MDA	6240-1 308 (400-1)			
CIRCLING	6320-1 387 (400-1)	6440-1 507 (600-1)	6720-2¼ 787 (800-2¼)	7140-3 1207 (1300-3)

MIRL Rwy 10-28 0

REIL Rwy 10 and 28 0