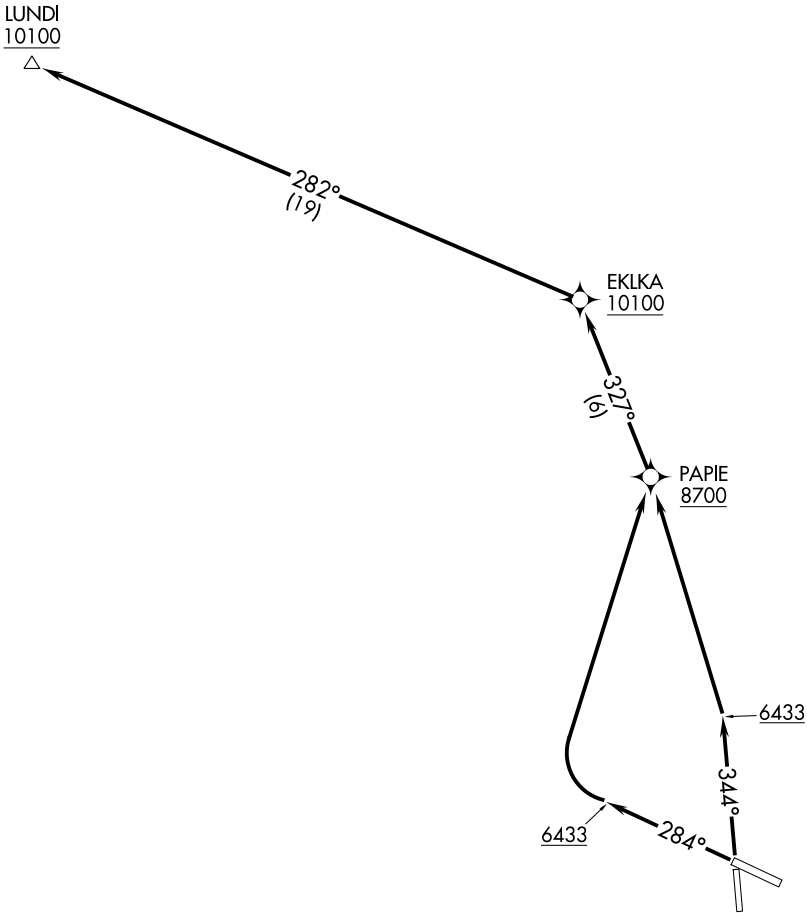


SALT LAKE CENTER
128.35 239.25

RNAV 1 - GPS.



TAKEOFF MINIMUMS

Rwys 10, 16: NA - ATC.

Rwy 28: Standard with minimum climb of 500' per NM to 6433 then minimum climb of 255' per NM to 7600.

Rwy 34: Standard with minimum climb of 500' per NM to 6433 then minimum climb of 260' per NM to 7600.

NOTE: Chart not to scale.

DEPARTURE ROUTE DESCRIPTION

TAKEOFF RUNWAY 28: Climb on heading 284° to 6433, then climbing right turn direct PAPIE, then on depicted route.

TAKEOFF RUNWAY 34: Climb on heading 344° to 6433, then climb direct PAPIE, then on depicted route.