

APP CRS
018°

Rwy Idg
TDZE
Apt Elev
N/A
N/A
756

RNAV (GPS)-A
OTTAWA EXEC (Z98)

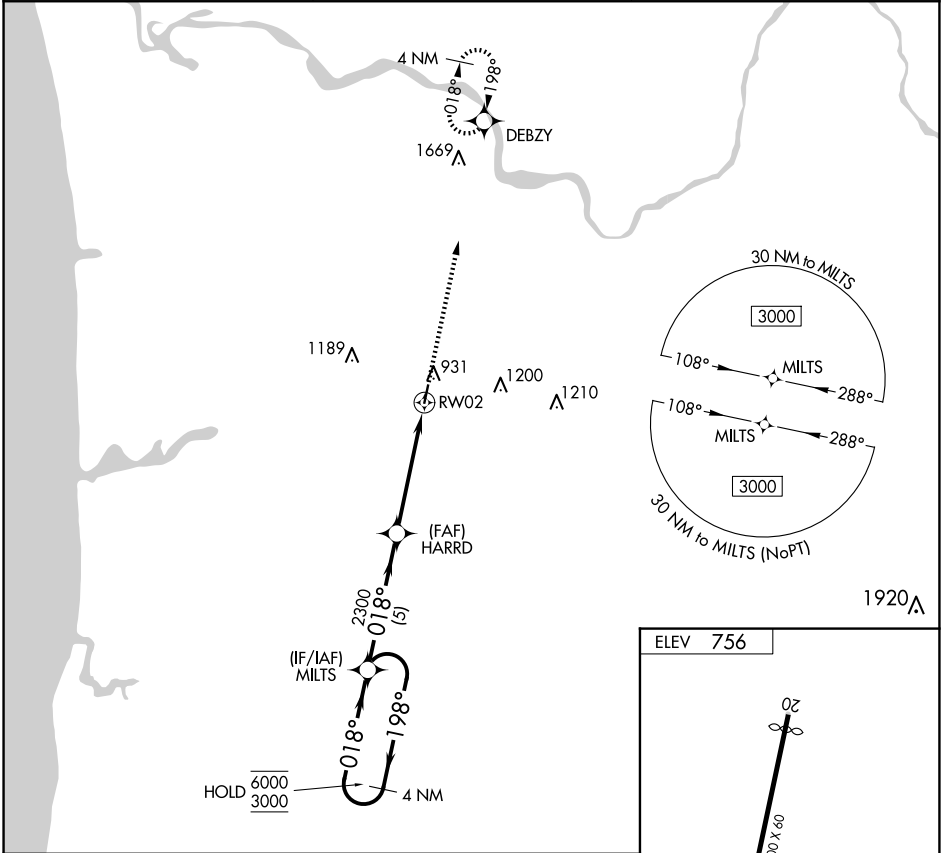
RNP APCH - GPS.

NA

Procedure NA at night. Circling NA west of Rwy 2-20.
Rwy 2 and 20 helicopter visibility reduction below 1 SM NA.
Use BIV altimeter setting.

MISSED APPROACH:
Climb to 3000 direct
DEBZY and hold.

BIV ASOS-3 119.025	GREAT LAKES APP CON 128.4 257.6	CTAF 122.90 0
------------------------------	---	-------------------------



4 NM Holding Pattern

MILTS

HARRD

3000

DEBZY

6000

3000

198°

018°

018°

3.00°

TCH 40

2300

RW02

5 NM

4.8 NM

CATEGORY	A	B	C	D
CIRCLING	1320-1 564 (600-2)	1380-1 624 (700-1)	NA	

ELEV 756

20

3800 X 60

0.11% UP

2

018°

URL Rwy 2 and 20

EC-1, 10 JUL 2025 to 07 AUG 2025

EC-1, 10 JUL 2025 to 07 AUG 2025