

SANDUSKY, MICHIGAN

AL-10457 (FAA)

24361

WAAS CH <b>49244</b> <b>W10A</b>	APP CRS <b>097°</b>	Rwy Idg <b>3499</b> TDZE <b>777</b> Apt Elev <b>777</b>
--	------------------------	---

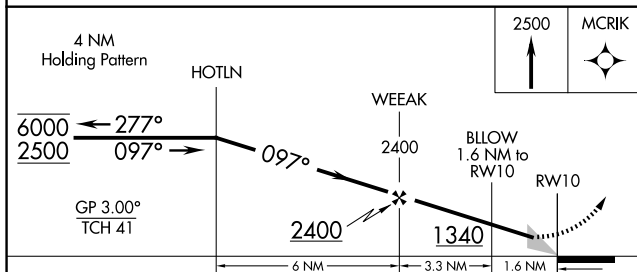
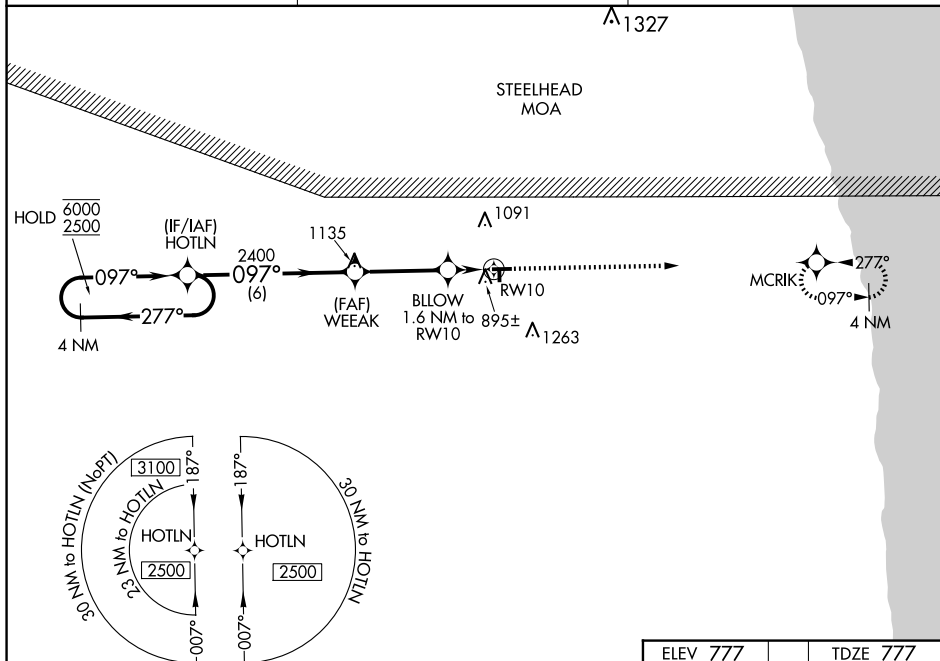
RNAV (GPS) RWY 10  
SANDUSKY CITY (Y83)

RNP APCH - GPS.	
-----------------	--

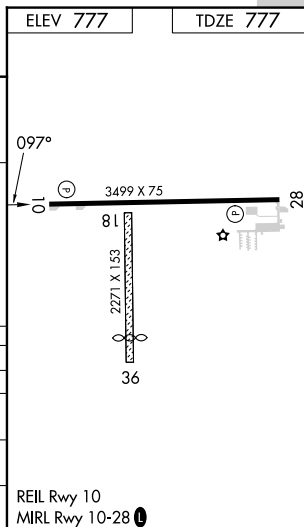
**T** Circling NA to Rwy 18 and 36. Circling NA north of Rwy 10-28.  
**A** NA Procedure NA at night. Baro-VNAV NA. Use Bad Axe altimeter setting.

**MISSED APPROACH:**  
Climb to 2500 direct  
MCRİK and hold.

BAX AWOS-3 <b>118.6</b>	CLEVELAND CENTER <b>127.7 290.425</b>	UNICOM <b>122.8 (CTAF) 0</b>
----------------------------	--	---------------------------------



CATEGORY		A	B	C	D
LPV	DA	1077-1	300 (300-1)		NA
LNAV/ VNAV	DA	1200-1¼	423 (500-1¼)		NA
LNAV	MDA	1200-1	423 (500-1)	1200-1¼ 423 (500-1¼)	NA
CIRCLING		1260-1 483 (500-1)	1340-1 563 (600-1)	1680-2¾ 903 (1000-2¾)	NA



SANDUSKY, MICHIGAN  
Orig 05OCT23

43°27'N-82°51'W

SANDUSKY CITY (Y83)  
RNAV (GPS) RWY 10

EC-1, 10 JUL 2025 to 07 AUG 2025