

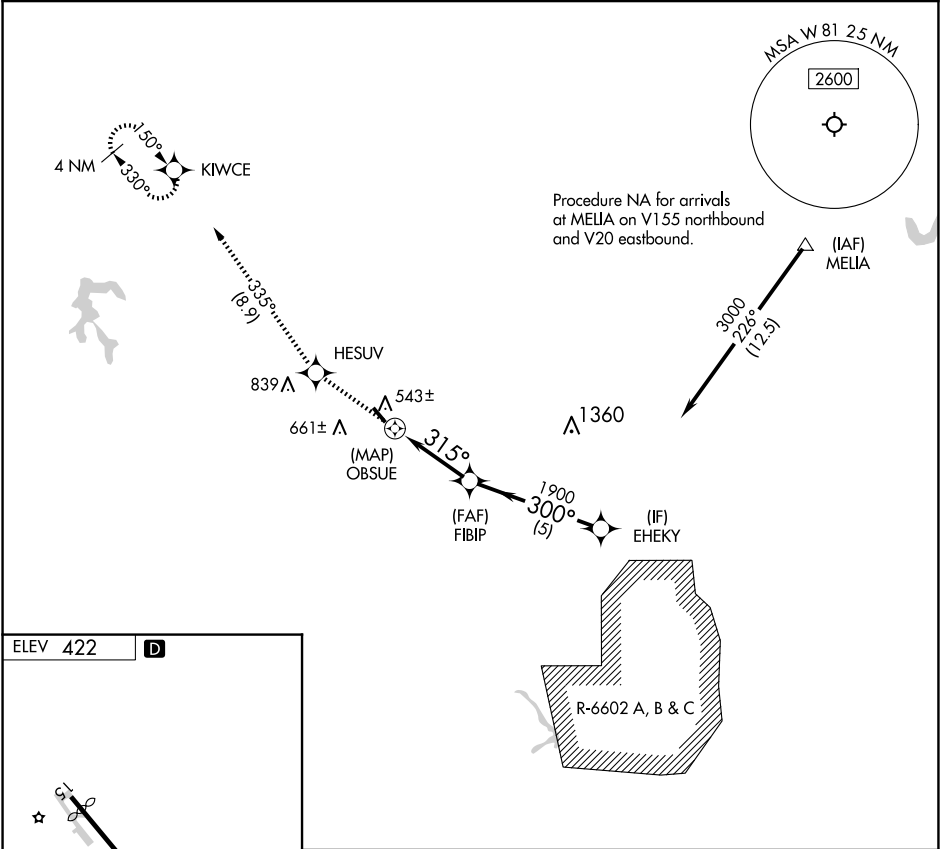
APP CRS	Rwy Idg	N/A
315°	TDZE	N/A
	Apt Elev	422

RNAV (GPS)-B
CREWE MUNI (W81)

RNP APCH - GPS.
▼ Procedure NA at night.
▲ Rwy 15 helicopter visibility reduction below 1 SM NA.

MISSED APPROACH: Climb to 3000 direct HESUV and on track 335° to KIWCCE and hold.

AWOS-3 119.05	WASHINGTON CENTER 118.75 377.1	UNICOM 122.8 (CTAF) 0
------------------	-----------------------------------	--------------------------



3000	HESUV	tr 335°	KIWCCE
FIBIP		EHEKY	
OBSUE		3000	
315°		300°	
3.3 NM		5 NM	
CATEGORY	A	B	C
CIRCLING	1420-3	998 (1000-3)	NA

NE-3, 10 JUL 2025 to 07 AUG 2025

NE-3, 10 JUL 2025 to 07 AUG 2025