

APP CRS	Rwy Idg	N/A
034°	TDZE	N/A
	Apt Elev	526

RNAV (GPS)-A

LUNENBURG COUNTY (W31)

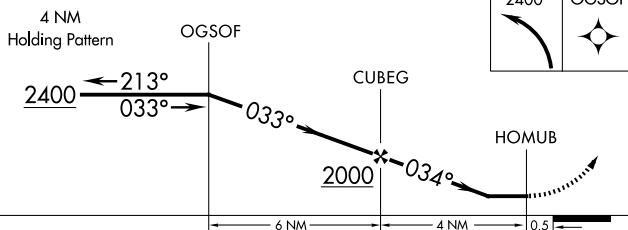
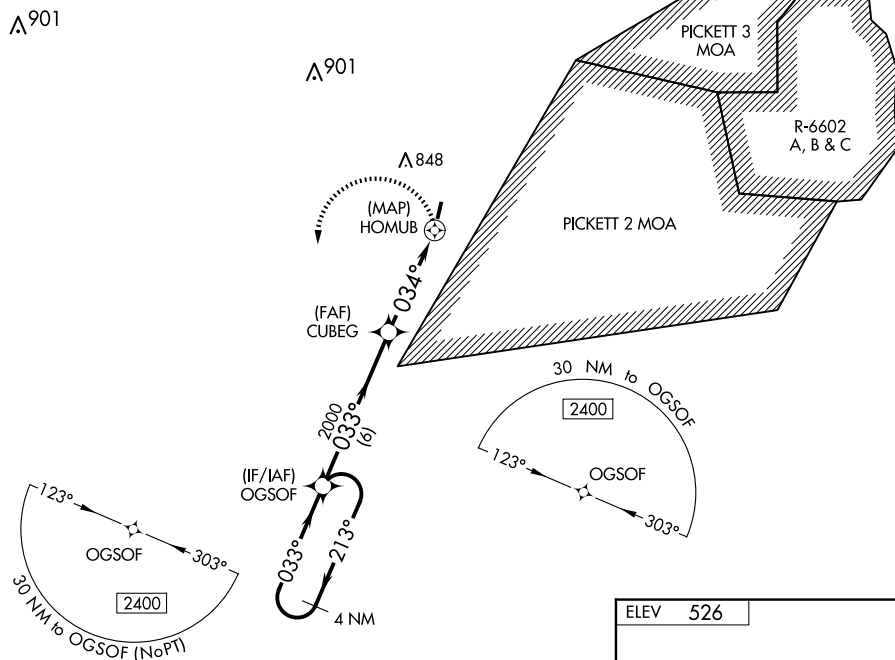
T Helicopter visibility reduction below 1 SM NA.
A DME/DME RNP-0.3 NA. Procedure NA at night.
 When local altimeter setting not received, use Blackstone altimeter setting and increase all MDA 60 feet.

MISSED APPROACH: Climbing left turn to 2400 direct OGSO and hold.

AWOS-3
123,875

WASHINGTON CENTER
118.75 377.1

UNICOM
122.7 (CTAF)



CATEGORY	A	B	C	D
C CIRCLING	1000-1 474 (500-1)	1080-1 554 (600-1)	NA	

