

APP CRS
071°

Rwy Idg
TDZE
Apt Elev
N/A
N/A
8207

RNAV (GPS)-C
GRANBY-GRAND COUNTY (GNB)

RNP APCH - GPS.

▼

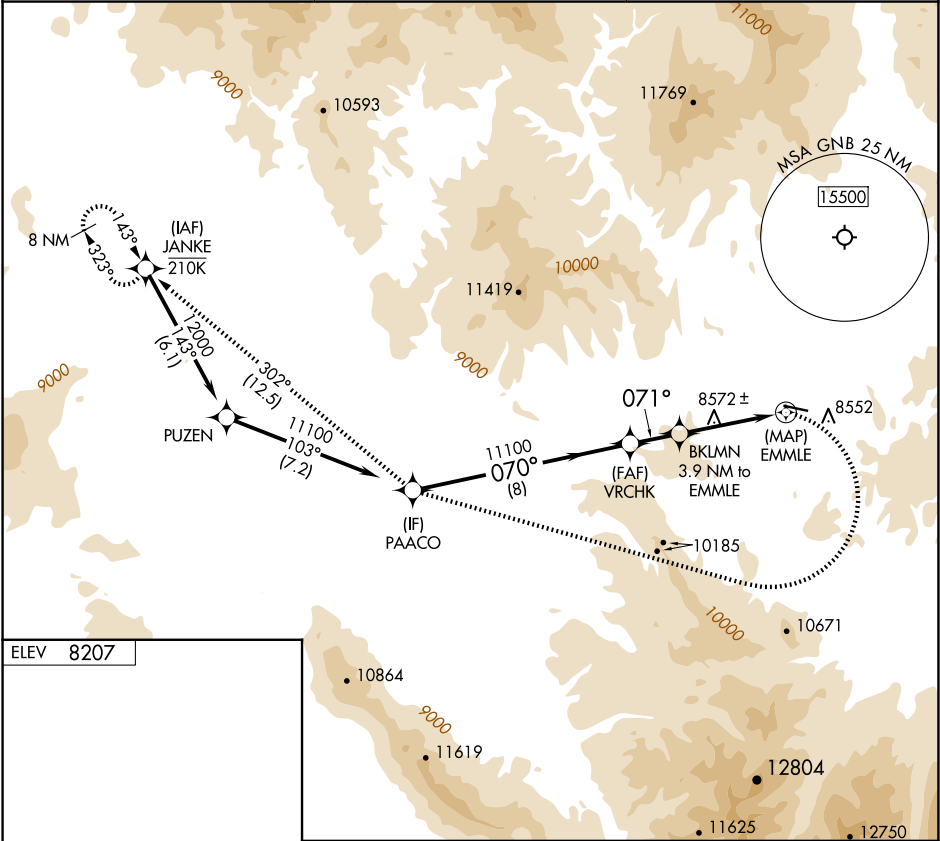
▲

❄

Procedure NA at night. Rwy 27 helicopter visibility reduction below 1 SM NA.
-24°C

MISSED APPROACH: (Do not exceed 165K until PAACO)
Immediate climbing right turn to 13000 direct PAACO
and on track 302° to JANKE and hold.

AWOS-3PT 119.925	DENVER CENTER 128.65 282.2	UNICOM 123.0 (CTAF) 0
----------------------------	--------------------------------------	--



ELEV 8207

LIRL Rwy 9-27 **0**

REIL Rwy 9 and 27 **0**

	PAACO	VRCHK	13000 PAACO	tr 302°	JANKE
	11100	11100	BKLMN 3.9 NM to EMMLE	EMMLE	
	8 NM		1.8 NM	3.9 NM	
CATEGORY	A	B	C	D	
CIRCLING	10180-1¼ 1973 (2000-1¼)	10180-1½ 1973 (2000-1½)	10180-3 1973 (2000-3)	NA	

SW-1, 10 JUL 2025 to 07 AUG 2025

SW-1, 10 JUL 2025 to 07 AUG 2025