

APP CRS  
**077°**

Rwy Idg  
TDZE **1863**  
Apt Elev **1883**

RNAV (GPS) RWY 8

SOUTHERN WEST VIRGINIA RGNL (E,B,D)

RNP APCH - GPS.

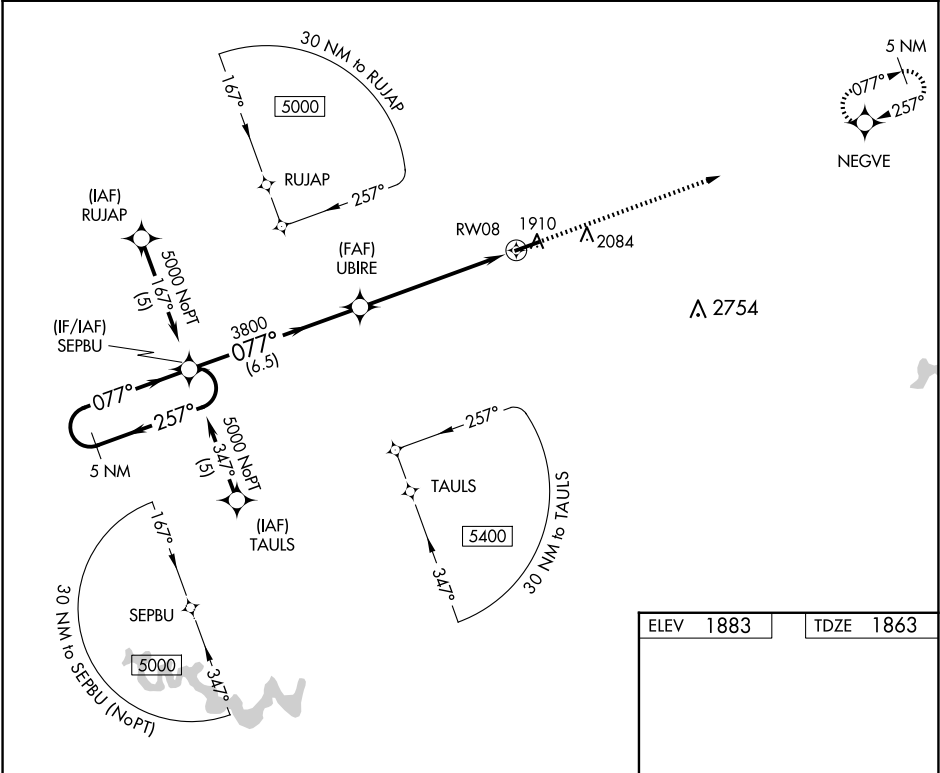
▼

NA

Obtain local altimeter setting on CTAF; when not received, use Beckley altimeter setting: increase all MDAs 140 feet and visibility LNAV Cat C/D and Circling Cat A/B ¼ SM and Circling Cat C ½ SM.

MISSED APPROACH: Climb to 5000 direct NEGVE and hold.

116 AWOS-3 <b>120.625</b>	INDIANAPOLIS CENTER <b>126.575 257.85</b>	UNICOM <b>122.8 (CTAF) 0</b>
------------------------------	--	---------------------------------



5 NM Holding Pattern

SEPBU

UBIRE

RW08

5000

NEGVE

3800

3.05° TCH 40

6.5 NM

6 NM

CATEGORY	A	B	C	D
LNAV MDA	2580-1 717 (700-1)	2580-1¼ 717 (700-1¼)	2580-2 717 (700-2)	
CIRCLING	2680-1 797 (800-1)		2760-2½ 877 (900-2½)	2900-3 1017 (1100-3)

5001 X 75

1.1% UP

077°

MIRL Rwy 8-26 0

REIL Rwys 8 and 26 0