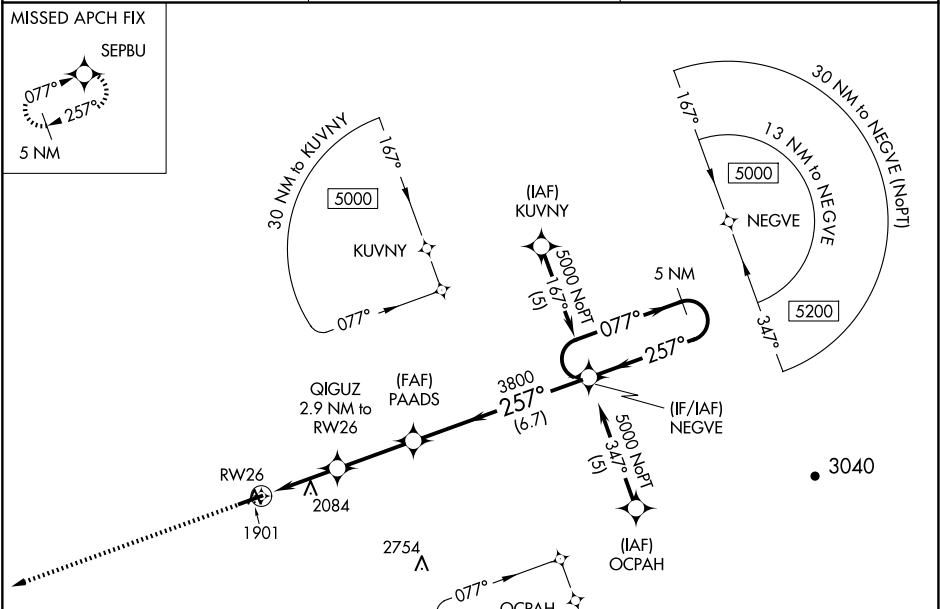


APP CRS	Rwy Idg	5001
257°	TDZE	1883
	Apt Elev	1883

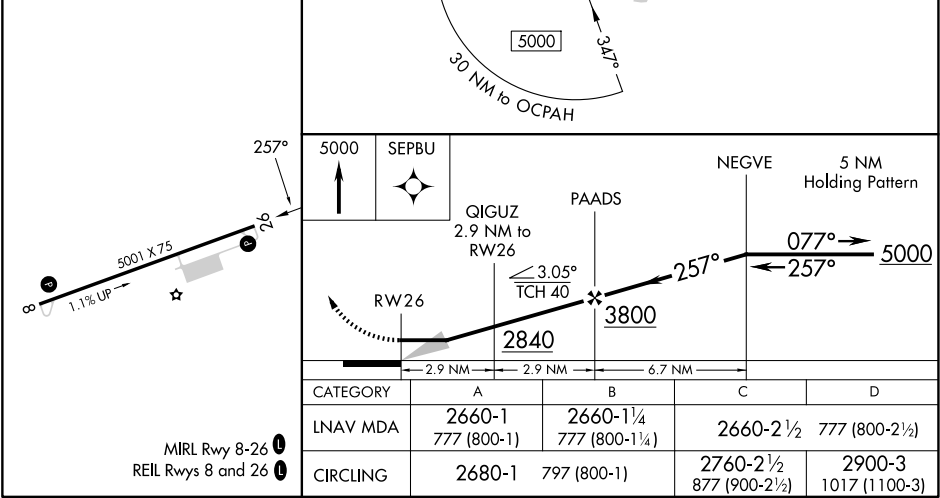
RNAV (GPS) RWY 26
SOUTHERN WEST VIRGINIA RGNL (E,B,D)

RNP APCH - GPS.	MISSED APPROACH: Climb to 5000 direct SEPBU and hold.
▼ Obtain local altimeter setting on CTAF; when not received, use Beckley altimeter setting: increase all MDAs 140 feet and visibility LNAV Cat A and Circling Cat A/B ¼ SM and Circling Cat C ½ SM.	

116 AWOS-3 120.625	INDIANAPOLIS CENTER 126.575 257.85	UNICOM 122.8 (CTAF) 0
-----------------------	---------------------------------------	--------------------------



ELEV 1883	TDZE 1883
-----------	-----------



NE-4, 10 JUL 2025 to 07 AUG 2025

NE-4, 10 JUL 2025 to 07 AUG 2025