

WAAS  
CH **72726**  
**W03A**

APP CRS  
**034°**

Rwy ldg  
TDZE **1308**  
Apt Elev **1348**

RNAV (GPS) RWY 3

BRANSON WEST MUNI/EMERSON FLD (FWB)

▼

▲ NA

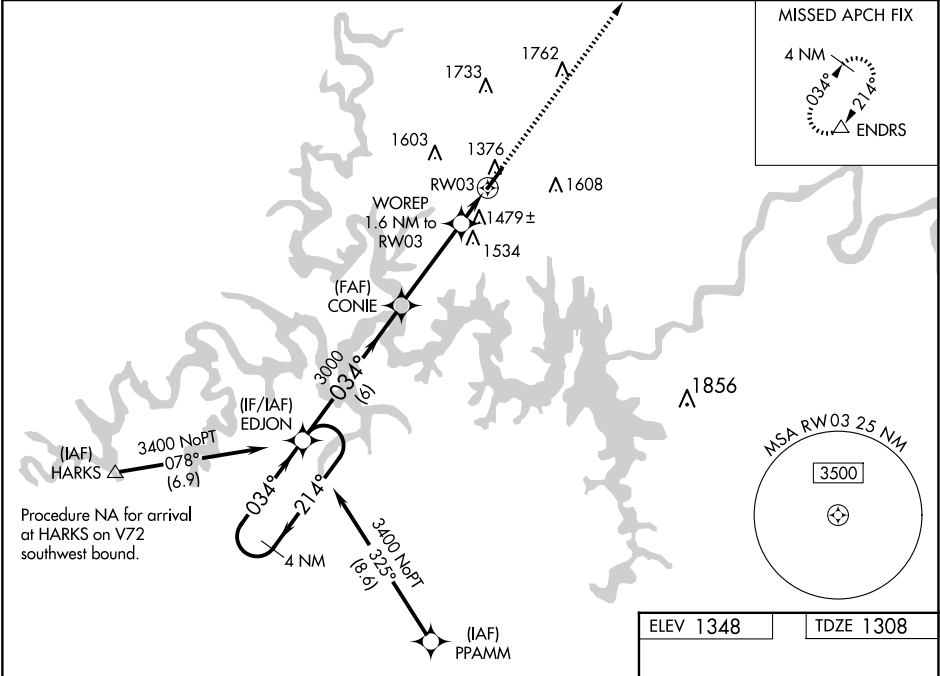
DME/DME RNP-0.3 NA. When local altimeter setting not received, use Branson altimeter setting; increase all DA 39 feet and all MDA 40 feet; increase LNAV/VNAV Cat A/B visibility to 1½ mile. For uncompensated Baro-VNAV systems, LNAV/VNAV NA below -17°C (2°F) or above 54°C (130°F). Baro-VNAV NA when using Branson altimeter setting.

MISSED APPROACH: Climb to 3000 direct ENDRS and hold.

AWOS-3PT  
**119.725**

SPRINGFIELD APP CON  
**126.35**

UNICOM  
**123.0 (CTAF) 0**



4 NM Holding Pattern

EDJON

CONIE

3000

ENDRS

3400

214°

034°

034°

3000

WOREP 1.6 NM to RW03

RW03

\*1840

\*LNAV only

GP 3.00° TCH 40

6 NM

3.6 NM

1.6 NM

CATEGORY	A	B	C	D
LPV DA	1508-1	200 (200-1)	NA	
LNAV/VNAV DA	1813-1¾	505 (500-1¾)	NA	
LNAV MDA	1740-1	432 (400-1)	NA	
CIRCLING	1900-1	552 (600-1)	NA	

5002 x 75

1.1% Up

034°

MIRL Rwy 3-21 0

REIL Rwy 3 and 21 0