

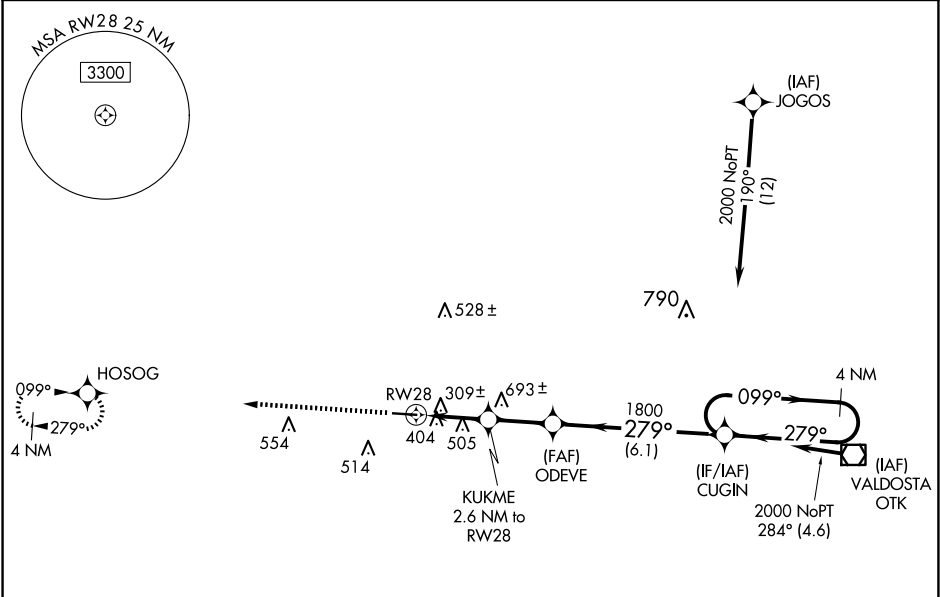
WAAS CH 99534 W28A	APP CRS 279°	Rwy Idg 5000 TDZE 185 Apt Elev 185
--	------------------------	---

RNAV (GPS) RWY 28

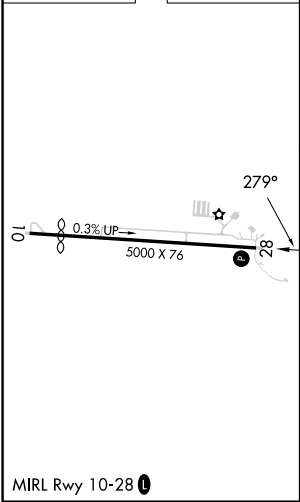
QUITMAN BROOKS COUNTY (4J5)

RNP APCH.	MISSED APPROACH: Climb to 2000 direct HOSOG and hold.
Procedure NA at night. Rwy 28 helicopter visibility reduction below 1 SM NA. Use Valdosta altimeter setting; when not received, use Thomasville altimeter setting and increase all MDA 20 feet; increase LP and LNAV Cat C visibility ½ SM.	

VALDOSTA APP CON ★ 126.6	CTAF 122.9 0
------------------------------------	------------------------



ELEV 185	TDZE 185
-----------------	-----------------



2000 HOSOG		Visual Segment - Obstacles.		4 NM Holding Pattern	
↑		KUKME 2.6 NM to RW28		CUGIN	
ODEVE		1060 1800		099° → 2000	
RW28		279°		← 279°	
-2.6 NM		2.3 NM		6.1 NM	
CATEGORY	A	B	C	D	
LP MDA	600-1	415 (500-1)	600-1 ¼ 415 (500-1 ¼)	NA	
LNAV MDA	860-1	675 (700-1)	860-1 ½ 675 (700-1 ½)	NA	