

WAAS CH <b>42734</b> <b>W10A</b>	APP CRS <b>099°</b>	Rwy Idg TDZE <b>182</b> Apt Elev <b>185</b>
--	------------------------	---

RNAV (GPS) RWY 10  
QUITMAN BROOKS COUNTY (4J5)

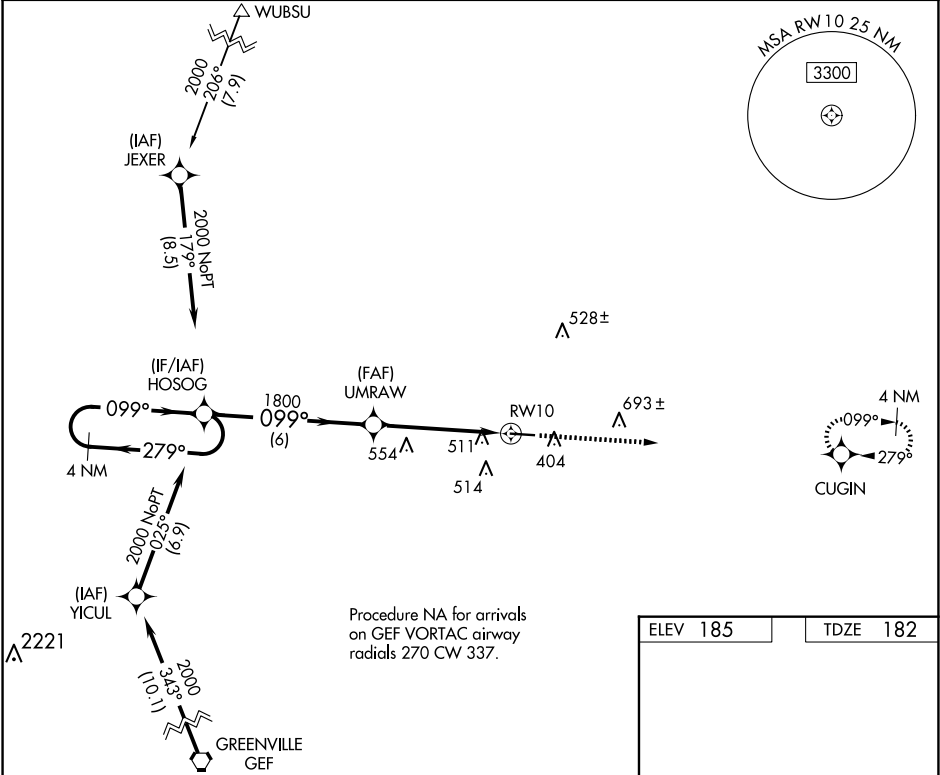
RNP APCH.

NA

Procedure NA at night. Rwy 10 helicopter visibility reduction below 1 SM NA. Use Valdosta altimeter setting; when not received, use Thomasville altimeter setting and increase all MDA 20 feet; increase LP Cat C visibility 1/8 SM.

MISSED APPROACH: Climb to 2000 direct CUGIN and hold.

VALDOSTA APP CON★ <b>126.6</b>	CTAF <b>122.9 0</b>
-----------------------------------	------------------------



4 NM Holding Pattern

Visual Segment - Obstacles.

2000 CUGIN

HOSOG

2000

279° 099°

099°

UMRAW

1800

RW10

6 NM 4.9 NM

CATEGORY	A	B	C	D
LP MDA	740-1	558 (600-1)	740-1 5/8 558 (600-1 5/8)	NA
LNAV MDA	820-1	638 (700-1)	820-1 7/8 638 (700-1 7/8)	NA

ELEV 185 TDZE 182

MIRL Rwy 10-28 0

SE-4, 10 JUL 2025 to 07 AUG 2025

SE-4, 10 JUL 2025 to 07 AUG 2025