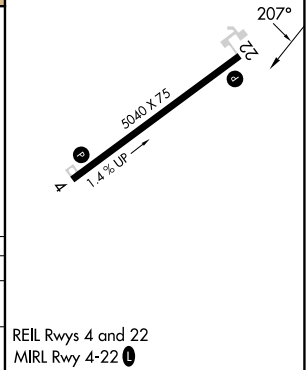
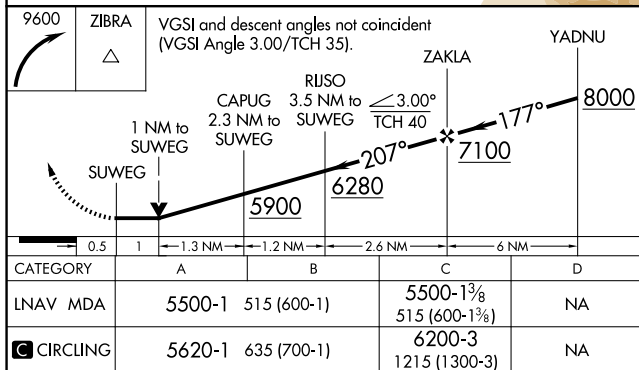
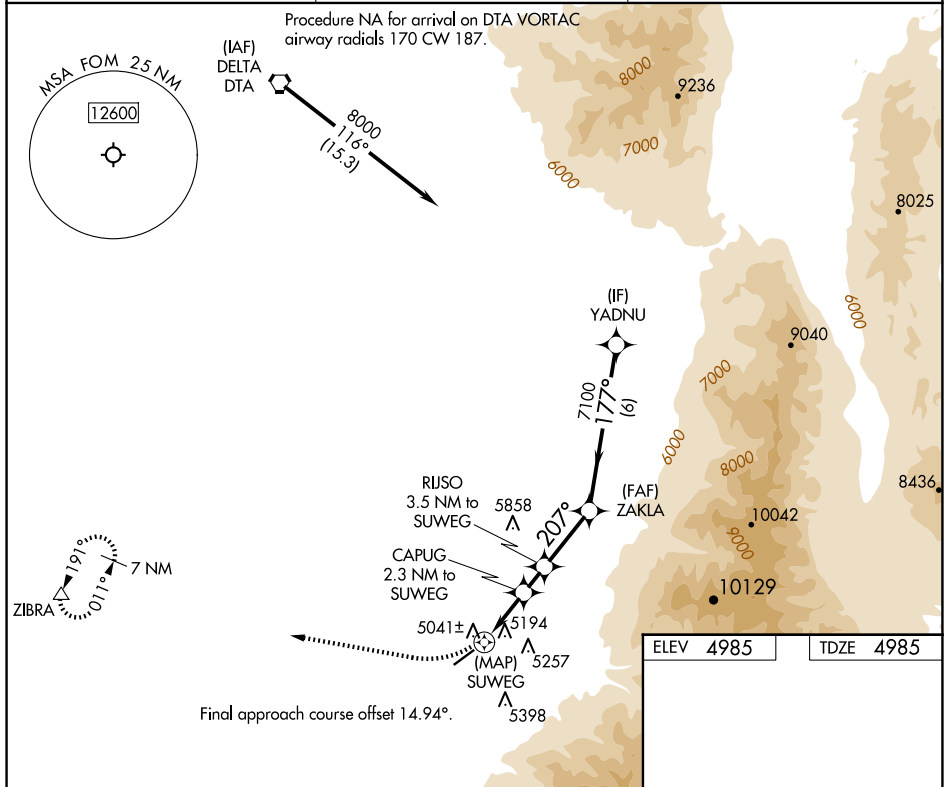


# RNAV (GPS) RWY 22

|          |   |
|----------|---|
| <b>T</b> |   |
| <b>A</b> | Rwy 22 helicopter visibility reduction below $\frac{3}{4}$ SM NA. |

**MISSED APPROACH:** Climbing right turn to 9600 direct ZIBRA and hold, continue climb-in-hold to 9600.

UNICOM  
122.8 (CTAF) **L**



SW-4, 10 JUL 2025 to 07 AUG 2025