

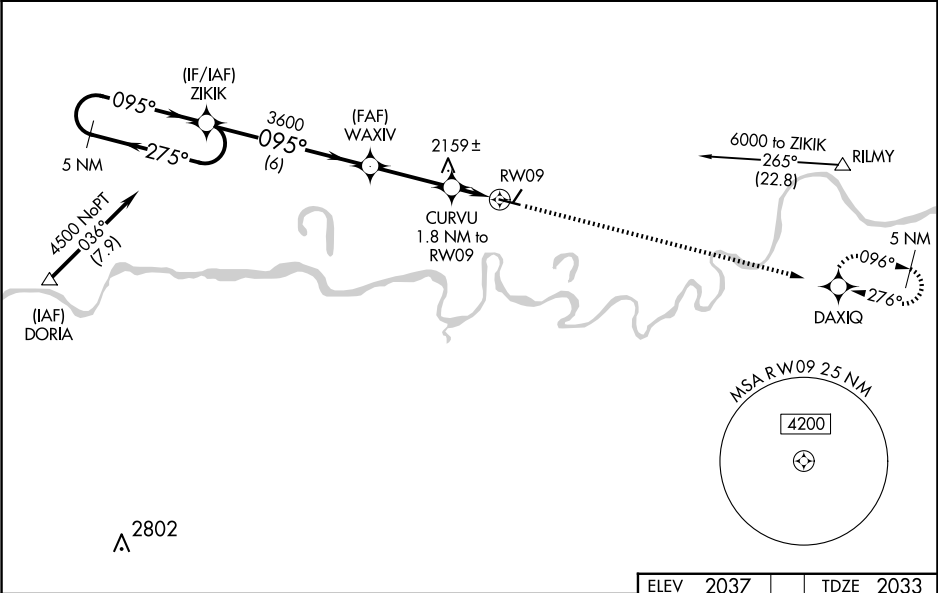
WAAS CH 66031 W09A	APP CRS 095°	Rwy Idg TDZE Apt Elev	4403 2033 2037
--	------------------------	-----------------------------	---

RNAV (GPS) RWY 9
POPLAR MUNI (PO1)

⚠ For uncompensated Baro-VNAV systems, LNAV/VNAV NA below -19°C (-2°F) or above 54°C (130°F). DME/DME RNP- 0.3 NA. Baro-VNAV and VDP NA with Wolf Point altimeter setting. When local altimeter not received, use Wolf Point altimeter setting: increase LPV DA to 2279, LNAV/VNAV DA to 2329; increase all MDAs 60 feet and LNAV Cat C/D visibility ¼ SM and Circling Cat C/D visibility ¼ SM. Helicopter visibility reduction below 1 SM not authorized. Circling NA to Rwy 2/20.

MISSED APPROACH: Climb to 4500 direct DAXIQ and hold.

AWOS-3PT 135.325	SALT LAKE CITY CENTER 126.85 305.2	UNICOM 122.8 (CTAF) 0
----------------------------	--	---------------------------------



5 NM Holding Pattern

VGSI and RNAV glidepath not coincident (VGSI Angle 3.00/TCH 24).

4500 DAXIQ

GP 3.00° TCH 40

ZIKIK

WAXIV

CURVU 1.8 NM to RW09

*1.2 NM to RW09

RW09

*2620

6 NM 3 NM 0.6 1.2 NM

*LNAV Only

CATEGORY	A	B	C	D
LPV DA		2233-1	200 (200-1)	
LNAV/VNAV DA		2283-1	250 (300-1)	
LNAV MDA	2420-1	387 (400-1)	2420-1⅛	387 (400-1⅛)
CIRCLING	2560-1 523 (600-1)	2600-1 563 (600-1)	2600-1½ 563 (600-½)	2740-2¼ 703 (800-2¼)

ELEV 2037 TDZE 2033

MIRL Rwy 9-27 0

This section provides a detailed view of the runway and approach path. It shows the 4403 x 75 runway and the 3020 x 80 runway. The approach path is shown with a 095° heading and a 27° angle. The chart also includes the 4403 x 75 runway and the 3020 x 80 runway.

NW-1, 10 JUL 2025 to 07 AUG 2025

NW-1, 10 JUL 2025 to 07 AUG 2025