

WAAS CH 45832 W17A	APP CRS 166°	Rwy Idg 3400 TDZE 1246 Apt Elev 1246
--	------------------------	---

RNAV (GPS) RWY 17

MAHNOMEN COUNTY (3N8)

RNP APCH.

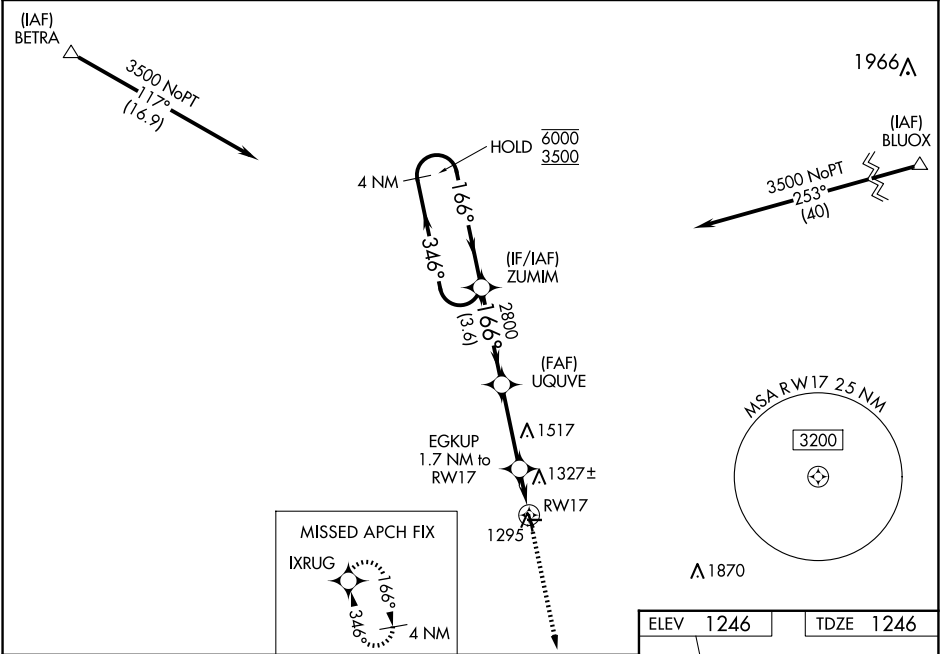
▼

▲

Circling NA to Rwy 9 and 27. Baro-VNAV and VDP NA when using Fosston altimeter setting. For uncompensated Baro-VNAV systems, LNAV/VNAV NA below -17°C or above 54°C. When local altimeter setting not received, use Fosston altimeter setting and increase all DA to 1549 feet; increase all MDA 60 feet.

MISSED APPROACH:
Climb to 3500 direct
IXRUG and hold.

AWOS-3PT 121.125	MINNEAPOLIS CENTER 127.35 278.3	CTAF 122.9
----------------------------	---	----------------------



4 NM Holding Pattern

VGSI and RNAV glidepath not coincident (VGSI Angle 3.00/TCH 25).

3500

IXRUG

GP 3.00° TCH 40

6000 ← 346°

3500 ← 166°

2800

2800

EGKUP 1.7 NM to RWY 17

* 1 NM to RWY 17

RWY 17

* 1820

3.6 NM

3.1 NM

0.7 NM

1 NM

CATEGORY	A	B	C	D
LPV DA	1496-1	250 (300-1)	NA	
LNAV/VNAV DA	1496-1	250 (300-1)	NA	
LNAV MDA	1580-1	334 (400-1)	NA	
CIRCLING	1640-1 394 (400-1)	1700-1 454 (500-1)	NA	

