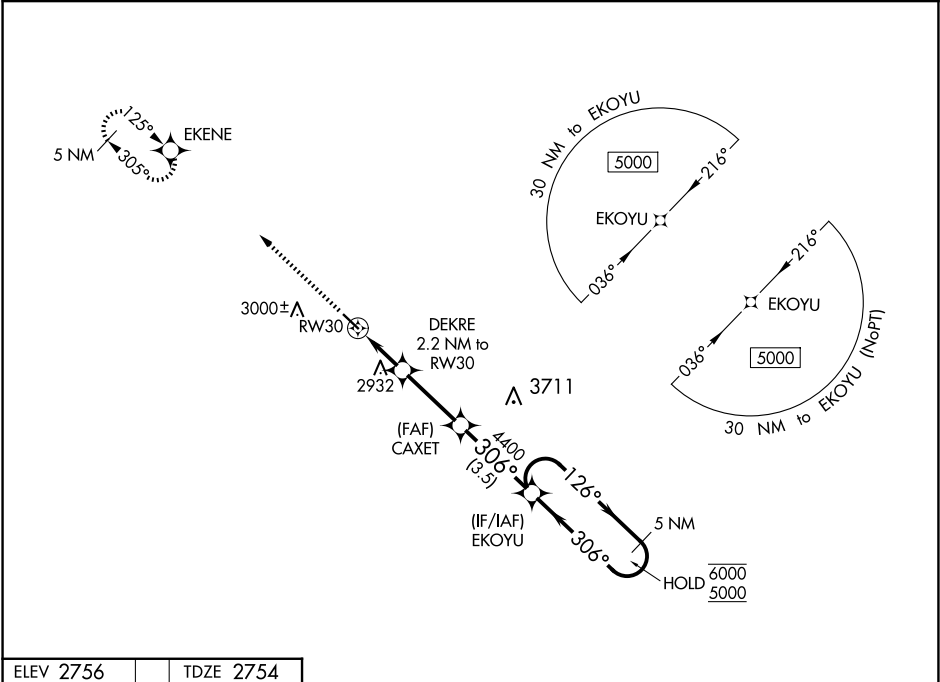


WAAS CH 66038 W30A	APP CRS 306°	Rwy Idg TDZE Apt Elev	4200 2754 2756
--	------------------------	-----------------------------	---

RNAV (GPS) RWY 30

BEACH (20U)

RNP APCH. ▼ For uncompensated Baro-VNAV systems, LNAV/VNAV NA below -20°C or above 54°C. Rwy 30 helicopter visibility reduction below ¾ SM NA.		MISSED APPROACH: Climb to 4700 direct EKENE and hold.
AWOS-3 118.175	SALT LAKE CENTER 126.85 305.2	UNICOM 122.8 (CTAF) 0



ELEV 2756	TDZE 2754	4700 ↑ EKENE ✱	VGSI and RNAV glidepath not coincident (VGSI Angle 3.00/TCH 27).		5 NM Holding Pattern EKOYU
* LNAV only		DEKRE 2.2 NM to RW30	CAXET 4400	306°	126° → 6000 ← 306° 5000
RW30		* 1.3 NM to RW30	* 3480	4400	GP 3.00° TCH 40
1.3 NM		0.9 NM	2.9 NM	3.5 NM	
CATEGORY		A	B	C	D
LPV DA		3004-1	250 (300-1)	NA	
LNAV/VNAV DA		3175-1½	421 (500-1½)	NA	
LNAV MDA		3180-1	426 (500-1)	NA	
CIRCLING		3280-1 524 (600-1)	3360-1 604 (700-1)	NA	