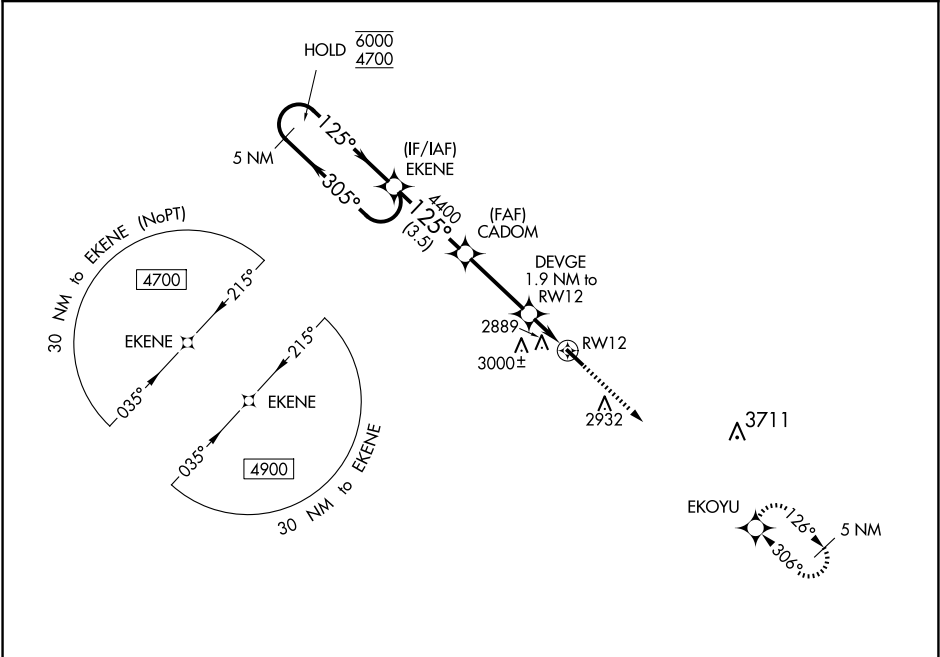


WAAS CH 61338 W12A	APP CRS 125°	Rwy Idg TDZE Apt Elev	4200 2756 2756
--	------------------------	-----------------------------	---

RNAV (GPS) RWY 12

BEACH (20U)

RNP APCH. ▼ For uncompensated Baro-VNAV systems, LNAV/VNAV NA below -20°C or above 54°C.		MISSED APPROACH: Climb to 5000 direct EKOYU and hold.
AWOS-3 118.175	SALT LAKE CENTER 126.85 305.2	UNICOM 122.8 (CTAF) 0



5 NM Holding Pattern		VGSI and RNAV glidepath not coincident (VGSI Angle 3.00/TCH 26).		5000	EKOYU
GP 3.00° TCH 40		* LNAV only			
CATEGORY	A	B	C	D	
LPV DA	3006-1	250 (300-1)	NA		
LNAV/VNAV DA	3051-1	295 (300-1)	NA		
LNAV MDA	3140-1	384 (400-1)	NA		
CIRCLING	3280-1 524 (600-1)	3360-1 604 (700-1)	NA		

ELEV 2756 TDZE 2756

MIRL Rwy 12-30