

WAAS CH <b>63017</b> <b>W16A</b>	APP CRS <b>162°</b>	Rwy Idg <b>10000</b> TDZE <b>69</b> Apt Elev <b>69</b>
--	------------------------	--

RNAV (GPS) RWY 16

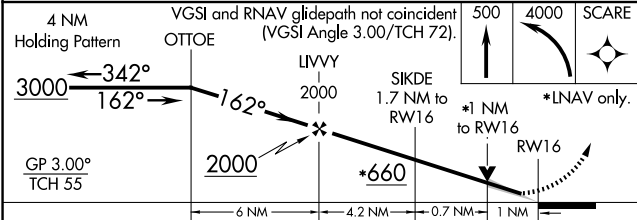
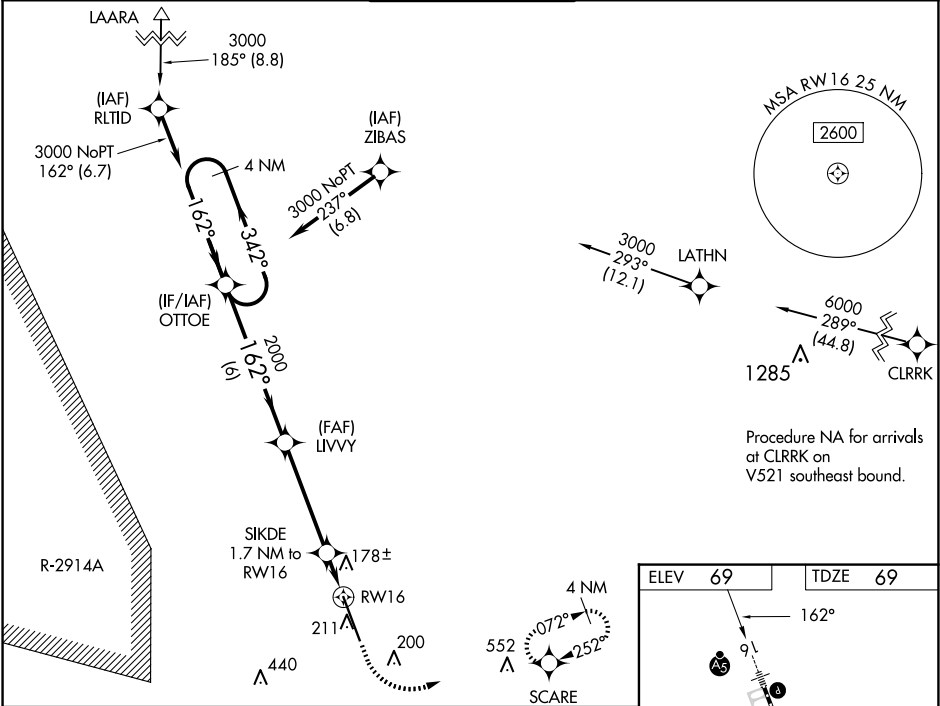
NORTHWEST FLORIDA BEACHES INTL (ECP)

For uncompensated Baro-VNAV systems, LNAV/VNAV NA below -15°C (5°F) or above 54°C (130°F). DME/DME RNP-0.3 NA. When local altimeter setting not received, use Destin altimeter setting and increase all DA 88 feet, increase all MDA 100 feet, and increase LNAV/VNAV all Cats visibility and LNAV Cat C and D visibility ¾ mile. Baro-VNAV and VDP NA when using Destin altimeter setting. For inop MALSR, increase LNAV Cat C and D visibility to 1 mile. For inop MALSR when using Destin altimeter setting, increase all LPV visibility to ¾ mile, increase all LNAV/VNAV visibility to 1¾ mile, and increase LNAV Cat C and D visibility to 1¾ mile.

MALSR

MISSED APPROACH: Climb to 500 then climbing left turn to 4000 direct SCARE and hold, continue climb-in-hold to 4000.

ATIS <b>119.975</b>	TYNDALL APP CON ★ <b>125.2</b> (N above 5000')	PANAMA CITY TOWER★ <b>118.95</b> (CTAF) <b>0</b>	GND CON <b>121.65</b>	CLNC DEL <b>123.75</b>
------------------------	---	---	--------------------------	---------------------------



CATEGORY	A	B	C	D
LPV DA		269-½	200 (200-½)	
LNAV/ VNAV DA		478-¾	409 (500-¾)	
LNAV MDA	440-½	371 (400-½)	440-⅝	371 (400-⅝)
CIRCLING	520-1	451 (500-1)	520-1½	620-2
			451 (500-1½)	551 (600-2)

