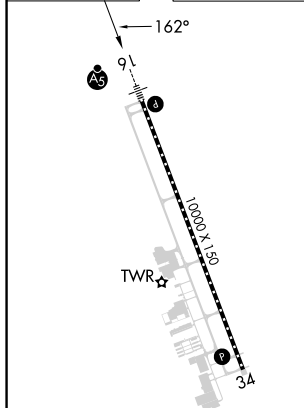


ILS or LOC RWY 16
NORTHWEST FLORIDA BEACHES INTL (ECP)

MISSED APPROACH: Climb to 600 then climbing left turn to 4000 on heading 025° and on MAI VORTAC R-237 to OLISS INT/MAI 33 DME and hold, continue climb-in-hold to 4000.

[illegible]

LOCALIZER 111.15
I-PUK
Chan 48 (Y)



TDZ/CL Rwy 16 **L**
HIRL Rwy 16-34 **L**
REIL Rwy 34 **L**

CATEGORY	A	B	C	D
S-ILS 16 #	269/24 200 (200-½)			
S-LOC 16	440/24 371 (400-½)		440/35 371 (400-¾)	
C CIRCLING	520-1	451 (500-1)	520-1½ 451 (500-1½)	620-2 551 (600-2)