

WAAS  
CH **56635**  
**W36A**

APP CRS  
**002°**

Rwy Idg  
TDZE **936**  
Apt Elev **936**

**RNAV (GPS) RWY 36**

WARSAW MUNI (R.A.W)

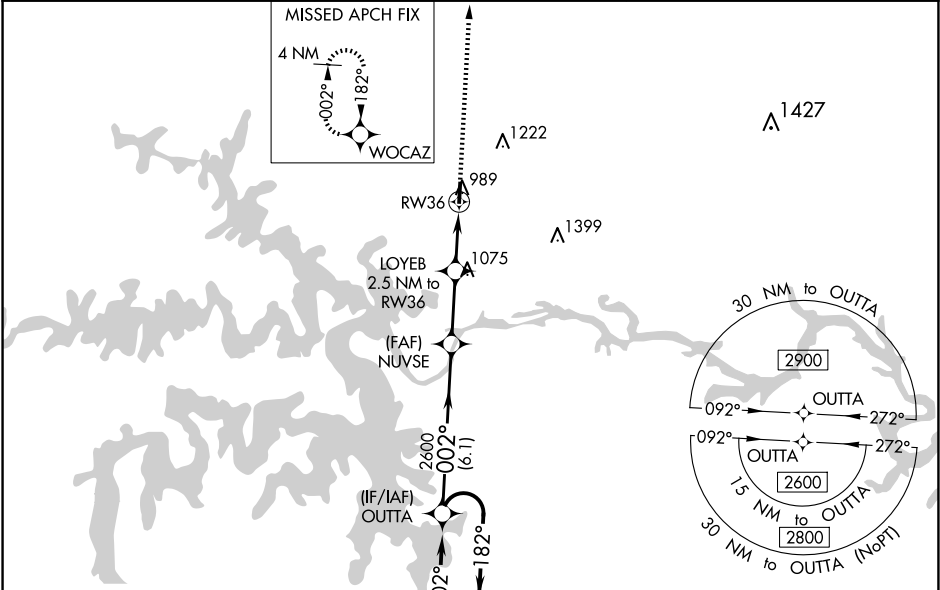
⚠

NA

Baro-VNAV and VDP NA when using Clinton altimeter setting. For uncompensated Baro-VNAV systems, LNAV/VNAV NA below -16°C (4°F) or above 54°C (130°F). DME/DME RNP-0.3 NA. Helicopter visibility reduction below 1 SM NA. When local altimeter not received, use Clinton altimeter setting and increase all DA 53 feet and all MDA 60 feet. Increase LNAV/VNAV all Cts visibility to 1½ mile, LNAV Cts C/D visibility to 1¾ mile and Circling Cat C visibility to 2 and Cat D visibility to 2½ mile.

MISSED APPROACH:  
Climb to 2600 direct  
WOCAZ and hold.

AWOS-3PT <b>118.325</b>	WHITEMAN APP CON ★ <b>127.45 284.0</b>	CTAF <b>122.9 0</b>
----------------------------	---	------------------------



4 NM  
Holding Pattern

OUTTA

2600

182°

002°

002°

2600

GP 3.00°

TCH 40

NUVSE

2600

LOYEB

2.5 NM to RW36

\*1.2 NM to RW36

RW36

WOCAZ

\*LNAV only.

2600

1760

6.1 NM

2.6 NM

1.3 NM

1.2 NM

CATEGORY	A	B	C	D
LPV DA	1136-1 200 (200-1)			
LNAV/VNAV DA	1215-1 279 (300-1)			
LNAV MDA	1340-1 404 (500-1)	1340-1 ¼ 404 (500-1 ½)		
CIRCLING	1340-1 404 (500-1)	1400-1 464 (500-1)	1580-1 ¾ 644 (700-1 ¾)	1580-2 644 (700-2)

ELEV 936

TDZE 936

81

4000 X 75

36

002° to RW36

MIRL Rwy 18-36

REIL Rwys 18 and 36