

WAAS CH <b>56638</b> <b>W34A</b>	APP CRS <b>344°</b>	Rwy Idg TDZE <b>1162</b> Apt Elev <b>1162</b>	<b>3400</b>
--	------------------------	---	-------------

RNAV (GPS) RWY 34

SISSETON MUNI (8D3)

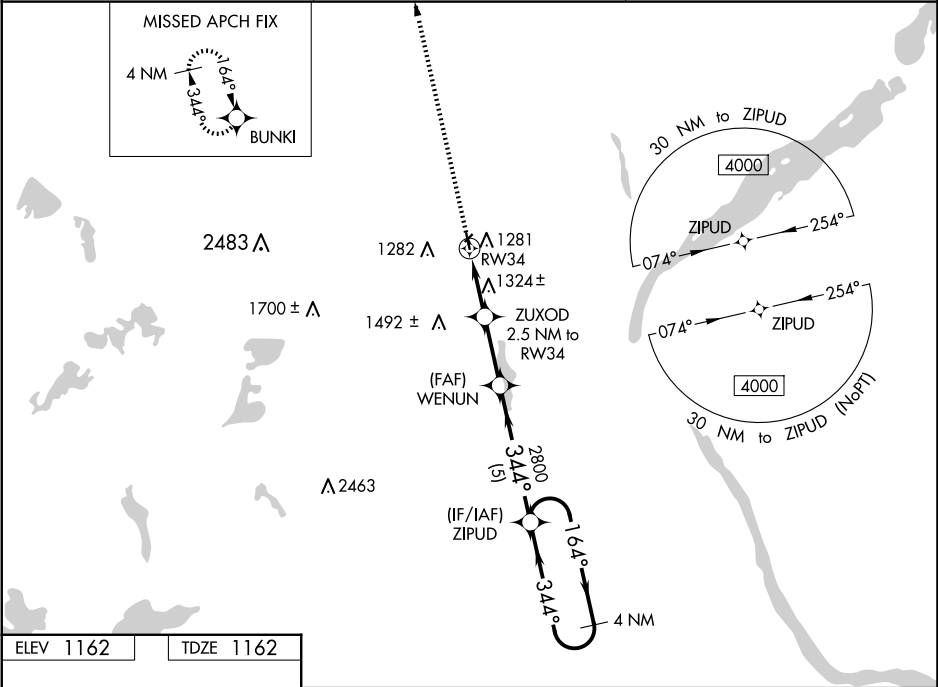
⚠

NA

Circling NA to Rwy 4 and 22. Baro-VNAV NA. DME/DME RNP-0.3 NA.  
Use Wheaton altimeter setting, when not received, use Ortonville altimeter setting and increase LPV DA to 1496 feet, LNAV/VNAV DA to 1673 feet and all MDA 20 feet.  
Increase LPV Cats A/B visibility 1⁄8 mile.

MISSED APPROACH: Climb to 4000 direct BUNKI and hold, continue climb in hold to 4000.

ETH AWOS-3 <b>118.775</b>	MINNEAPOLIS CENTER <b>128.5 306.2</b>	CTAF <b>122.90</b>
------------------------------	--	-----------------------



ELEV 1162

TDZE 1162

4000

BUNKI

VGSI and RNAV glidepath not coincident (VGSI Angle 3.00/TCH 28).

4 NM Holding Pattern

\*LNAV only

ZUXOD 2.5 NM to RW34

WENUN 2800

ZIPUD

164° → 4000

← 344°

GP 3.00° TCH 40

2.5 NM

2.5 NM

5 NM

CATEGORY	A	B	C	D
LPV DA	1478-1	316 (400-1)		NA
LNAV/VNAV DA	1655-1¾	493 (500-1¾)		NA
LNAV MDA	1640-1	478 (500-1)		NA
CIRCLING	1660-1 498 (500-1)	1700-1 538 (600-1)		NA