

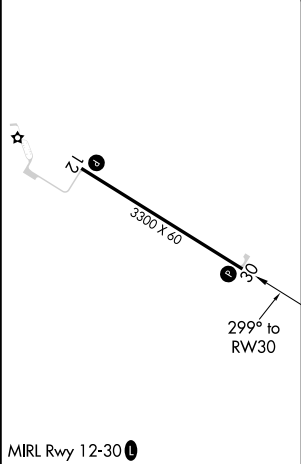
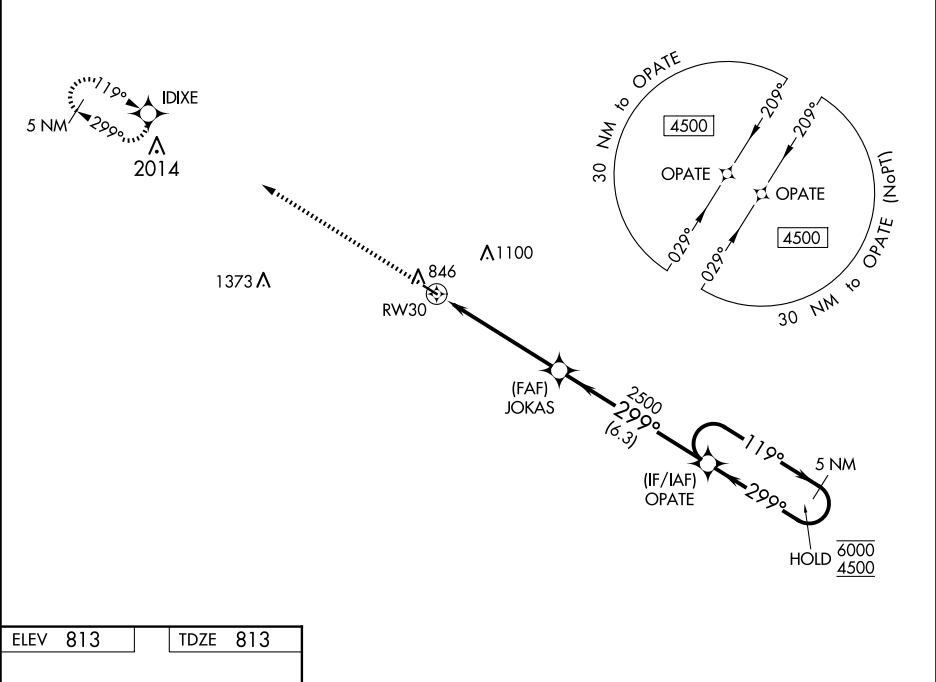
WAAS CH 86437 W30A	APP CRS 299°	Rwy Idg 3300 TDZE 813 Apt Elev 813
--	------------------------	---

RNAV (GPS) RWY 30

MEMPHIS MEML (Ø3D)

RNP APCH.	MISSED APPROACH: Climb to 4500 direct IDIXE and hold, continue climb-in-hold to 4500.
▼ Rwy 30 helicopter visibility reduction below ¾ SM NA. ▲ NA Baro-VNAV NA. Use Kirksville altimeter setting.	

IRK ASOS 121.125	KANSAS CITY CENTER 126.225 317.775	CTAF 122.90
----------------------------	--	-----------------------



4500	IDIXE	JOKAS	OPATE	5 NM Holding Pattern
↑	✧	2500	2500	119° → 6000 ← 299° 4500
RW30		5.2 NM	6.3 NM	GP 3.00° TCH 40
CATEGORY	A	B	C	D
LPV DA	1 144-1 331 (400-1)			NA
LNAV/VNAV DA	1 144-1 331 (400-1)			NA
LNAV MDA	1 340-1	527 (600-1)	1 340-1½ 527 (600-1½)	NA
◼ CIRCLING	1 340-1	527 (600-1)	1 500-2 687 (700-2)	NA

NC-3, 10 JUL 2025 to 07 AUG 2025

NC-3, 10 JUL 2025 to 07 AUG 2025