

WAAS CH 40048 W34A	APP CRS 337°	Rwy Idg 3700 TDZE 1730 Apt Elev 1730
----------------------------------------	------------------------	-----------------------------------------------------------------

RNAV (GPS) RWY 34

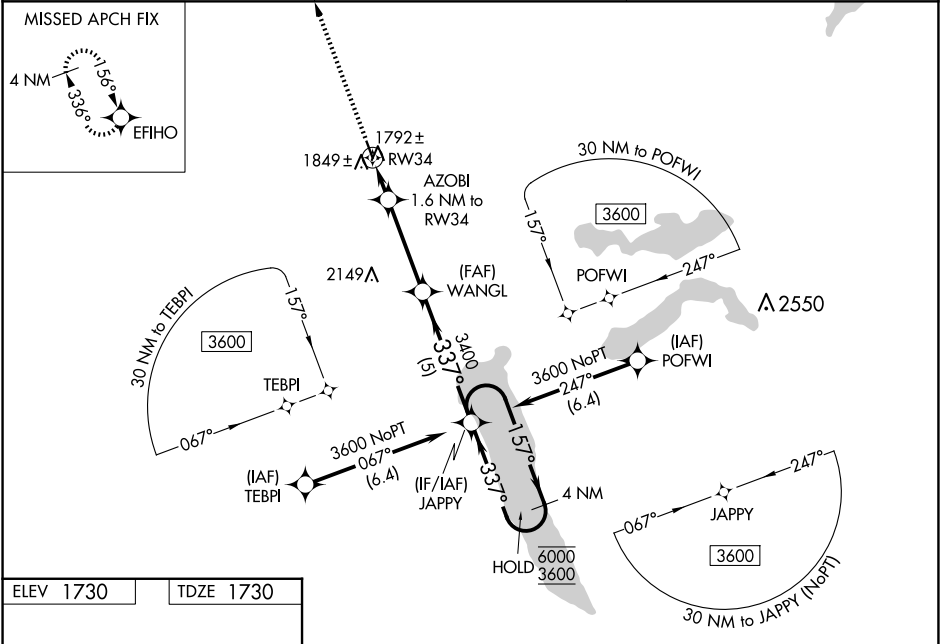
WILDER (6E5)

RNP APCH - GPS.

For uncompensated Baro-VNAV systems, LNAV/VNAV NA below -18°C or above 54°C.
Rwy 34 helicopter visibility reduction below ¾ SM NA. Baro-VNAV and VDP NA when using MDS altimeter setting. When local altimeter setting not received, use MDS altimeter setting and increase LPV DA to 2056 feet; increase LNAV/VNAV DA to 2180 feet and all visibilities ¾ SM. Increase all MDAs 80 feet.

MISSED APPROACH: Climb to 3600 direct EFIHO and hold.

AWOS-3P 118.15	MINNEAPOLIS CENTER 126.25 339.8	CTAF 122.90
--------------------------	-------------------------------------------	-----------------------



ELEV 1730 TDZE 1730

MIRL Rwy 16-34

3600

EFIHO

AZOBI 1.6 NM to RW34

WANGL

JAPPY

4 NM Holding Pattern

157° 6000

337° 3600

GP 3.00° TCH 35

CATEGORY	A	B	C	D
LPV DA	1980-1	250 (300-1)	NA	NA
LNAV/VNAV DA	2100-1	370 (400-1)	NA	NA
LNAV MDA	2100-1	370 (400-1)	NA	NA
CIRCLING	2180-1 450 (500-1)	2220-1 490 (500-1)	NA	NA