

WAAS CH 49246 W16A	APP CRS 157°	Rwy Idg TDZE 1729 Apt Elev 1730
--	------------------------	---

RNAV (GPS) RWY 16

WILDER (6E5)

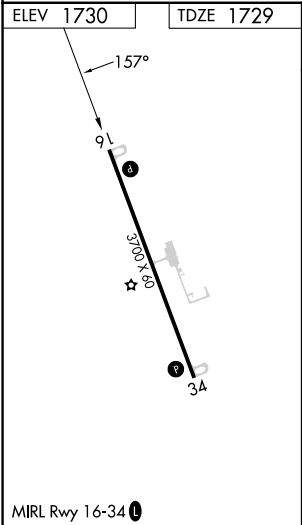
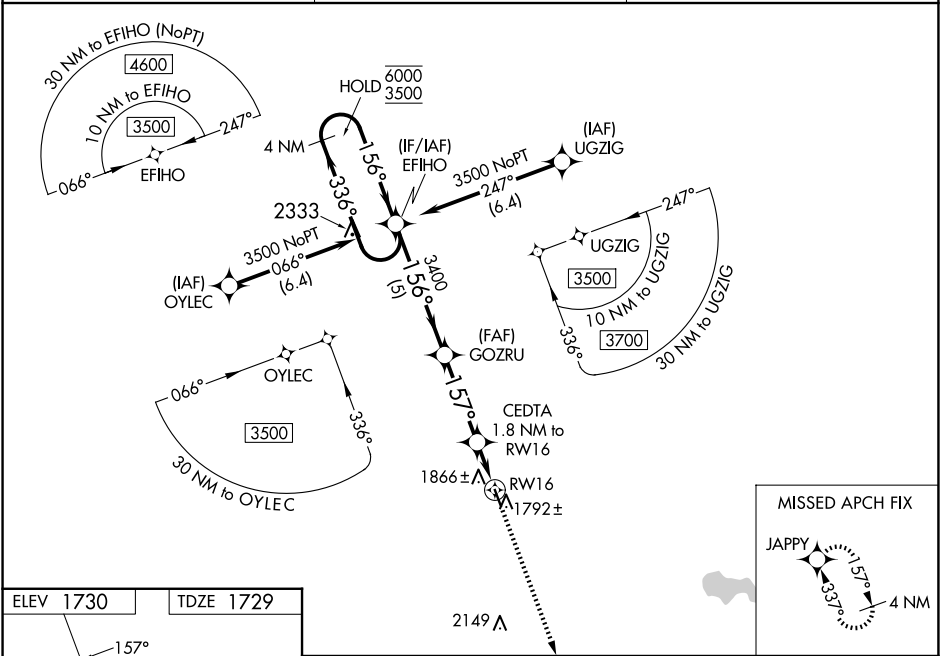
RNP APCH - GPS.

⚠

For uncompensated Baro-VNAV systems, LNAV/VNAV NA below -18°C or above 54°C. Rwy 16 helicopter visibility reduction below ¾ SM NA. Baro-VNAV and VDP NA when using MDS altimeter setting. When local altimeter setting not received, use MDS altimeter setting and increase LPV DA to 2055 feet; increase LNAV/VNAV DA to 2200 feet and all visibilities ½ SM. Increase all MDAs 80 feet.

MISSED APPROACH: Climb to 3600 direct JAPPY and hold.

AWOS-3P 118.15	MINNEAPOLIS CENTER 126.25 339.8	CTAF 122.90
--------------------------	---	-----------------------



EFIHO		GOZRU		CEDTA 1.8 NM to RW16	
4 NM Holding Pattern		3400		1.1 NM to RW16	
6000 ← 336°		156° →		157°	
3500		3400		2340	
GP 3.00°		5 NM		0.7	
TCH 34		3.3 NM		1.1 NM	
CATEGORY	A	B	C	D	
LPV DA	1979-1	250 (300-1)	NA		
LNAV/VNAV DA	2120-1½	391 (400-1½)	NA		
LNAV MDA	2120-1	391 (400-1)	NA		
CIRCLING	2180-1	2220-1	NA		
	450 (500-1)	490 (500-1)			