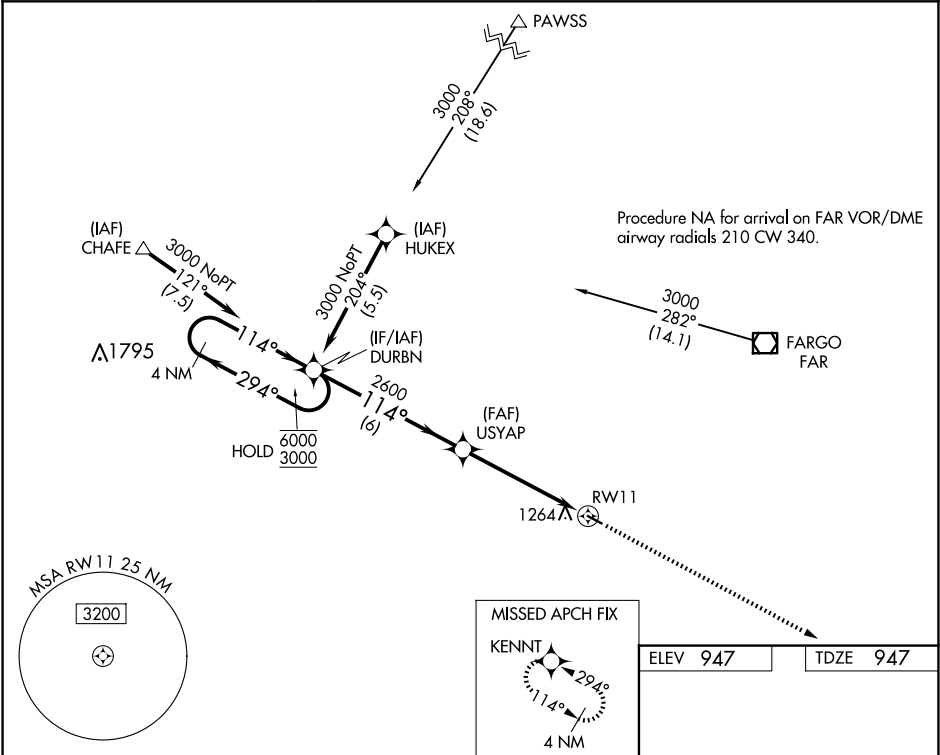


WAAS	APP CRS	Rwy Idg	3300
CH 97733	114°	TDZE	947
W11A		Apt Elev	947

RNAV (GPS) RWY 11

ROBERT ODEGAARD FLD (K74)

RNP APCH-GPS.		MISSED APPROACH: Climb to 3000 direct KENNT and hold.
Rwy 11 helicopter visibility reduction below ¾ SM NA. Use Fargo altimeter setting; when not received, use Moorhead altimeter setting.		
FAR ASOS	FARGO APP CON	CTAF
124.5 379.2	120.4 377.15	122.9 0



4 NM Holding Pattern		VGSI and descent angles not coincident (VGSI Angle 3.00/TCH 25).		3000 KENNT	
6000 ← 294°		114° →		114° to RWY 11	
3000		2600		3300 X 60	
6 NM		5.1 NM		29	
CATEGORY	A	B	C	D	
LP MDA	1440-1	493 (500-1)	NA		
LNAV MDA	1620-1	673 (700-1)	NA		
CIRCLING	1680-1	733 (800-1)	NA		