

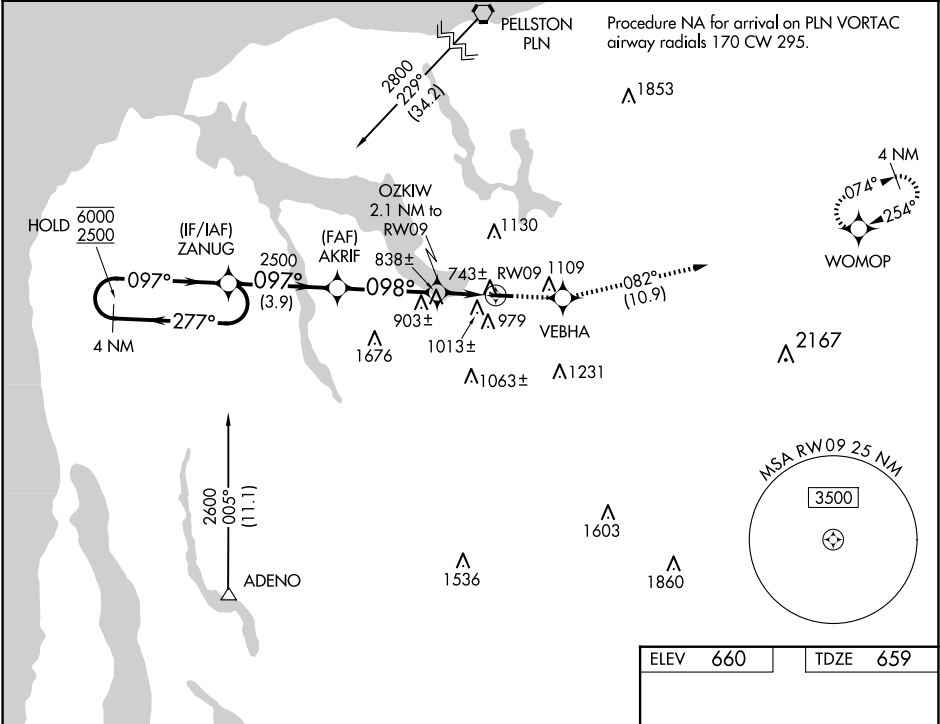
WAAS CH <b>97526</b> <b>W09A</b>	APP CRS <b>098°</b>	Rwy Idg TDZE <b>659</b> Apt Elev <b>660</b>
--	------------------------	---

RNAV (GPS) RWY 9

BOYNE CITY MUNI (N98)

RNP APCH - GPS.	MISSED APPROACH: Climb to 3200 direct VEBHA and on track 082° to WOMOP and hold.
▼ ▲NA	Use CVX altimeter setting; when not received, use MGN altimeter setting. Procedure NA at night. Rwy 9 helicopter visibility reduction below 1 SM NA.

CVX AWOS-3P <b>120.0</b>	MINNEAPOLIS CENTER <b>134.6 354.05</b>	UNICOM <b>122.8</b> (CTAF)	<b>122.9</b>
-----------------------------	---	-------------------------------	--------------



VGSI and descent angles not coincident (VGSI Angle 4.00/TCH 28).				
4 NM Holding Pattern				
ZANUG AKRIF OZKIW 2.1 NM to RW09				
6000 2500 2500 1360 3.00° TCH 40				
097° 097° 098°				
3.9 NM 3.6 NM 2.1 NM				
CATEGORY	A	B	C	D
LP MDA	1060-1	401 (400-1)	NA	
INAV MDA	1260-1	601 (600-1)	NA	
CIRCLING	1480-1¼ 820 (900-1¼)	1500-1¼ 840 (900-1¼)	NA	

ELEV 660	TDZE 659
3200 VEBHA tr 082° WOMOP	
098° 4001 X 75 27	
REIL Rwy 27 MIRL Rwy 9-27	

EC-1, 10 JUL 2025 to 07 AUG 2025

EC-1, 10 JUL 2025 to 07 AUG 2025