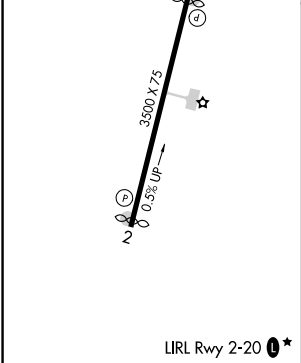
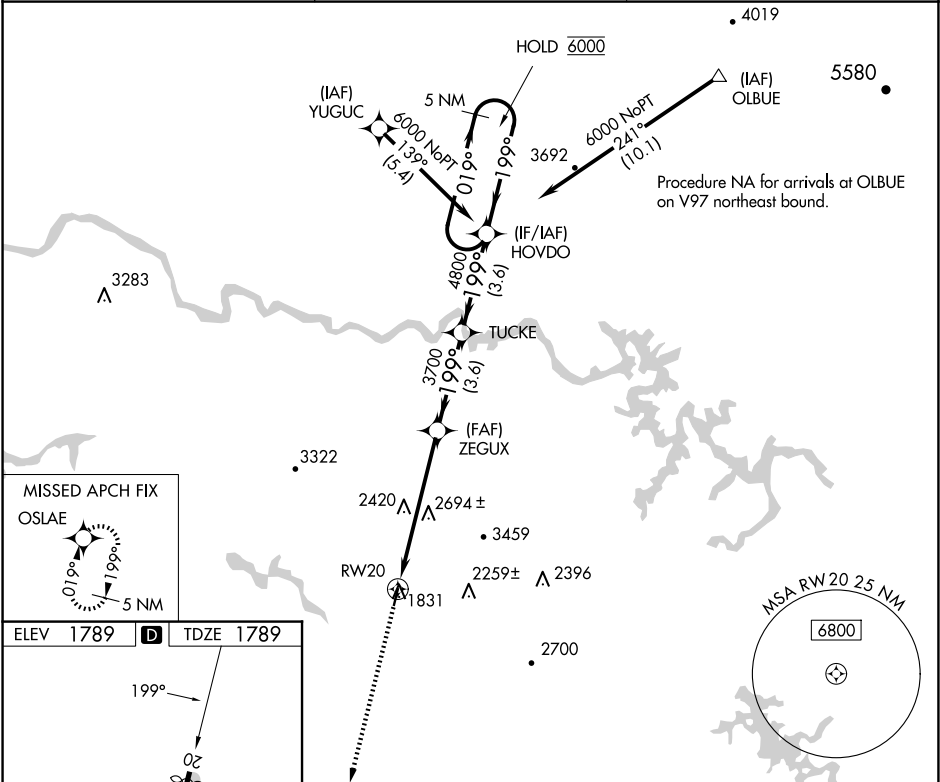


WAAS CH 86825 W20A	APP CRS 199°	Rwy Idg TDZE 1789 Apt Elev 1789
--	------------------------	---

RNAV (GPS) RWY 20

MARTIN CAMPBELL FLD (1A3)

RNP APCH - GPS. ▼ Procedure NA at night. Rwy 20 helicopter visibility reduction below 1 SM NA. ▲ NA Use Andrews altimeter setting, when not received, use Dalton altimeter setting and increase all MDAs 160 feet.		MISSED APPROACH: Climb to 6000 direct OSLAE and hold, continue climb in hold to 6000.
RHP AWOS-3 119.675	ATLANTA CENTER 133.1 342.425	CTAF 122.90*



6000 ↑		OSLA E		VGSI and descent angles not coincident (VGSI Angle 4.00/TCH 43).		5 NM Holding Pattern			
				HOVDO					
		RW20		TUCKE		019° → ← 199° 6000			
		ZEGUX		199°					
		3.00° TCH 43		3700		4800			
		5.9 NM		3.6 NM		3.6 NM			
CATEGORY		A		B		C		D	
LP MDA		2960-1¼ 1171 (1200-1¼)		2960-1½ 1171 (1200-1½)		2960-3 1171 (1200-3)		NA	
LNAV MDA		3020-1¼ 1231 (1300-1¼)		3020-1½ 1231 (1300-1½)		3020-3 1231 (1300-3)		NA	